



2019 – 2020

United Way of Central Indiana

Annual Report

[CHANGE TOMORROW. TODAY.]

Thank you for being with us, staying with us, and working with us to make our community a place where everyone has the opportunity to reach their full potential.

—Ann Murtlow



Dear friends of United Way of Central Indiana,

When the honor of board chair was bestowed upon me at United Way’s Annual Celebration in June of 2018, I had no premonition of what the next 24 months would hold. I did have confidence, though – confidence in my board colleagues to help us think strategically and thoughtfully about United Way’s future; confidence in our United Way team to demonstrate the highest level of excellence and care for our mission; and confidence in United Way’s incredibly supportive network of donors, partners, volunteers and advocates who believe in our work and give so generously of their time and treasure to our cause.

In my first year as board chair, we began a new journey to reimagine our impact, our philanthropy and our community engagement. We developed and adopted a new Strategic Framework that created impact initiatives – basic needs, family opportunity, and social innovation – to help struggling individuals and families reach their full potential. I’m proud of how hard we worked, together, to shift our decades-old operating model into one that is innovative, agile and laser-focused on the more than 216,000 households who are living in or are one step away from poverty. Today, we are starting to receive and analyze the results of our transformation. As you’ll read about in this annual report, through United Way’s data and research efforts, grant-making and investments, community engagement, advocacy and public policy, thought leadership, and programs, we are making remarkable progress. And, I’m proud to say that all of this work never stopped as we weathered the impossible: the COVID-19 health and economic crisis. We never stopped planning for the months ahead while also raising and distributing significant funds with community partners to meet critical basic needs during the pandemic. We never stopped leading the nonprofit sector as it navigated through these extraordinary times. We never stopped caring.

As I think back at all we accomplished these past two years, I can’t help but smile as my confidence in this organization has continued to strengthen. Even through massive change and unimaginable crisis, we lead, we unite, we plan, we act, and we prove our value to the community. We are United Way.

Thank you, colleagues and friends. It’s been quite the ride.



Bryan Mills
Board Chair, United Way of Central Indiana
President and CEO, Community Health Network

Dear friends of United Way of Central Indiana,

We began fiscal year 2019-2020 with a renewed focus on fighting poverty with the rally cry, “Change Tomorrow. Today.” Since unveiling United Way’s new strategic framework in 2018, this year provided the opportunity for us to quantify our impact in basic needs, family opportunity and social innovation. Inside, you’ll see how we’ve tied our investments directly to reducing generational poverty, meeting individuals’ basic needs, stabilizing families, and finding innovative solutions to problems in our community. Because of the enormous support of you – our donors, volunteers, advocates and partners – we are making great progress.

But earlier this year, the world stopped functioning as we knew it. The fear of spreading COVID-19 rocked every sector of the economy. Hoosiers were losing jobs, food was in short supply, and despair was everywhere. By March 13, 2020, United Way and our funding partners from Lilly Endowment Inc, the Central Indiana Community Foundation (through the Glick Fund and The Indianapolis Foundation) , Eli Lilly and Company Foundation, Nina Mason Pulliam Charitable Trust, and the Richard M. Fairbanks Foundation quickly responded with a major investment to create an economic relief fund to help our community through the crisis. “With hardship, there is hope” became our new headline of optimism during this unprecedented time. In the following pages, we tell the stories about a community coming together - how we responded to its unique needs during a time that challenged every individual and every organization beyond our wildest imagination and how we will continue the work of serving people’s basic needs and stabilizing families as we recover in the months and years to come.

Our fiscal year closed out with another important message from all of us at United Way to the Black community – “We Hear You, and We’re Ready.” There has been a broad awakening on the existence of systemic racism. We know that it has played and continues to play a role in the plight of a disproportionate number of families of color who are struggling in Central Indiana. Many people in our community now have a deeper knowledge on the issues, and we responded with a new educational series about racism. United Way of Central Indiana is fully committed to diversity, equity and inclusion in all we do. It’s time for change, and we’re ready.

It’s also time to say thank you to our outgoing board chair, Bryan Mills, who steps down this year after a two-year term and hands the gavel to Rafael Sanchez. Bryan has led United Way through a period of monumental change – from our 100th anniversary and business model transformation to the COVID-19 crisis. I couldn’t imagine a more thoughtful, strategic, and dedicated leader to counsel us through such extraordinary moments. I’d like to thank Bryan for his commitment and dedication to United Way – not only as board chair but also as a long-time donor, volunteer, supporter and friend.

Through all the messages we’ve conveyed this year, one thing will always be clear: United Way is here to fight for the education, financial stability, health and basic needs of every person in our community, no matter the circumstances. Thank you for being with us, staying with us, and working with us to make our community a place where everyone has the opportunity to reach their full potential.



Ann D. Murtlow
President & CEO
United Way of Central Indiana

We are United Way

OUR VISION

Central Indiana will be a community where children, individuals and families thrive; neighbors care for each other; and we are proud of all our residents' quality of life.

WHAT WE DO

Fight for the education, financial stability, health and basic needs of everyone in our community.

OUR SERVICE AREA

The communities of Boone, Hamilton, Hancock, Hendricks, Marion and Morgan counties.

Three Opportunities. Endless Impact.

United Way of Central Indiana works with donors to direct their giving toward programs that directly align with their philanthropic passions. Our community impact portfolio contains three distinct strategies that focus on our community's most critical problems as well as opening doors to new opportunities that improve people's lives in sustainable ways.

In partnership with a vetted network of community-based organizations, United Way helps to provide the necessities that stabilize individuals in crisis, improve the education and upward economic mobility of a whole family, and create innovative solutions to disrupt generational poverty – all while connecting donors to specific causes they're most passionate about.



Basic Needs

Food. Shelter. Health. Transportation. Most of us take these essentials for granted, but for many people these basic needs are in critically short supply or non-existent. Our Basic Needs work provides support to our most vulnerable neighbors and life-saving assistance to those in crisis situations – helping those in immediate need survive today so they can thrive tomorrow.



Family Opportunity

Intergenerational economic mobility lies at the heart of the American Dream. Our Family Opportunity work supports integrated programs that improve the education, financial stability and overall health of the whole family. By intentionally working with parents, caregivers and children together, we create pathways for success and give families the tools needed to secure long-term stability and a brighter future.



Social Innovation

Our Social Innovation initiative is an exciting opportunity to form new partnerships that can disrupt the ways we currently address and prevent some of our community's oldest problems. By harnessing Central Indiana's resilient and entrepreneurial spirit, creating space for exchanging and incubating new ideas, improving technology, and expanding successful small-scale programs system-wide, we are accelerating positive change throughout our community.

Board Members

Jeb Banner •
Boardable

Michael R. Becher
Retired - Deloitte LLP

Scott Beier
Cummins, Inc.

Mary Boelke •
Deloitte LLP

Scott E. Bruns •
Ernst & Young LLP

Tory Callaghan Castor •
Indiana University Health

Matt Cohoat
Becknell Industrial

Rod Cotton
Roche Diagnostics

Deborah Daniels •
Krieg DeVault LLP

Michael Dilts
Shiel Sexton Company, Inc.

Claudette Einhorn
Community Volunteer

Claire Fiddian-Green •
Richard M. Fairbanks Foundation, Inc.

Andre Franklin
Covance Central Laboratories

Geoff Gailey
Miller Pipeline Corporation

Brian R. Garrison
Faegre Drinker Biddle & Reath

Joe Gilbert
Anthem Blue Cross and Blue
Shield of Indiana

Natalie Guzman
Fifth Third Bank

Lisa Harris, M.D.
Eskenazi Health

Jeff Harrison •
Citizens Energy Group

Richard E. Hester •
Indiana Business Advisors

Abigail W. Hohmann
Site Strategies Advisory, LLC

Kalen Jackson
Indianapolis Colts

Kelley Karn
Duke Energy

Stephanie C. Kim •
Talamon Corporation

Mark Lemieux
Citizens Bank

Nicole Lorch
First Internet Bank of Indiana

Scott Luc •
Cate Brunton Luc Group
Merrill Lynch

James M. Macdonald, III
JPMorgan Chase Bank, N.A.

John Mason
OneAmerica

Jimmie L. McMillian
Penske Entertainment Corporation

Ann Merkel •
The National Bank of Indianapolis

Bryan Mills •
Community Health Network

Ann Murtlow •
United Way of Central Indiana

Michael North
Katz, Sapper & Miller, LLP

Johna Norton
Eli Lilly and Company

Michael O'Connor •
Eli Lilly and Company

Sam Odle •
Bose McKinney & Evans LLP

Darrin L. Orr
Master Enterprises

Gregory Pemberton
Retired - Ice Miller LLP

Lauren Petersen
TechPoint

Mamon Powers, III
Powers & Sons Construction, Inc.

Mark Ratekin
Confirmit

Georgiana Reynal
St. Vincent Foundation, Inc.

Tobin P. Richer
KAR Auction Services

Christopher B. Rigsbee
CNO Financial Group, Inc.

N. Clay Robbins
Lilly Endowment Inc.

Rafael A. Sanchez •
Old National Bank

Julie Singer •
Raymond James & Associates, Inc.

Denny Sponsel
RJE business interiors

Connie Bond Stuart •
PNC

Ninad Thanawala
Roche Diagnostics

Patzetta Trice
Trice Strategic Consulting

Susanne Wasson
Corteva Agriscience

Heather Willey
Barnes & Thornburg LLP

Jean Wojtowicz •
Cambridge Capital Management
Corp.

Terence Yen
Retired - Eli Lilly and Company

DIRECTOR EMERITUS

R. James Alerding
Alerding Consulting, LLC

Kathryn Betley
Community Volunteer

Vincent Caponi
Retired - Ascension Health

Karen Gentleman
Gentleman McCarty

Marianne Glick
GlickArt.com

Donald Knebel
Barnes & Thornburg LLP

Bud Melton
Retired - First Indiana Bank, N.A.

Jamie Merisotis
Lumina Foundation

Andy Mohr
Andy Mohr Automotive

John Neighbours
Retired - Faegre Baker Daniels LLP

David Resnick
Katz, Sapper & Miller, LLP

Rabbi Dennis Sasso
Congregation Beth-El Zedeck

Zachary B. Scott
Retired - UPS

Jerry Semler
Retired - OneAmerica

Maribeth Smith
Maribeth Smith & Associates, Inc.

Don Tanselle
Sease, Gerig & Associates

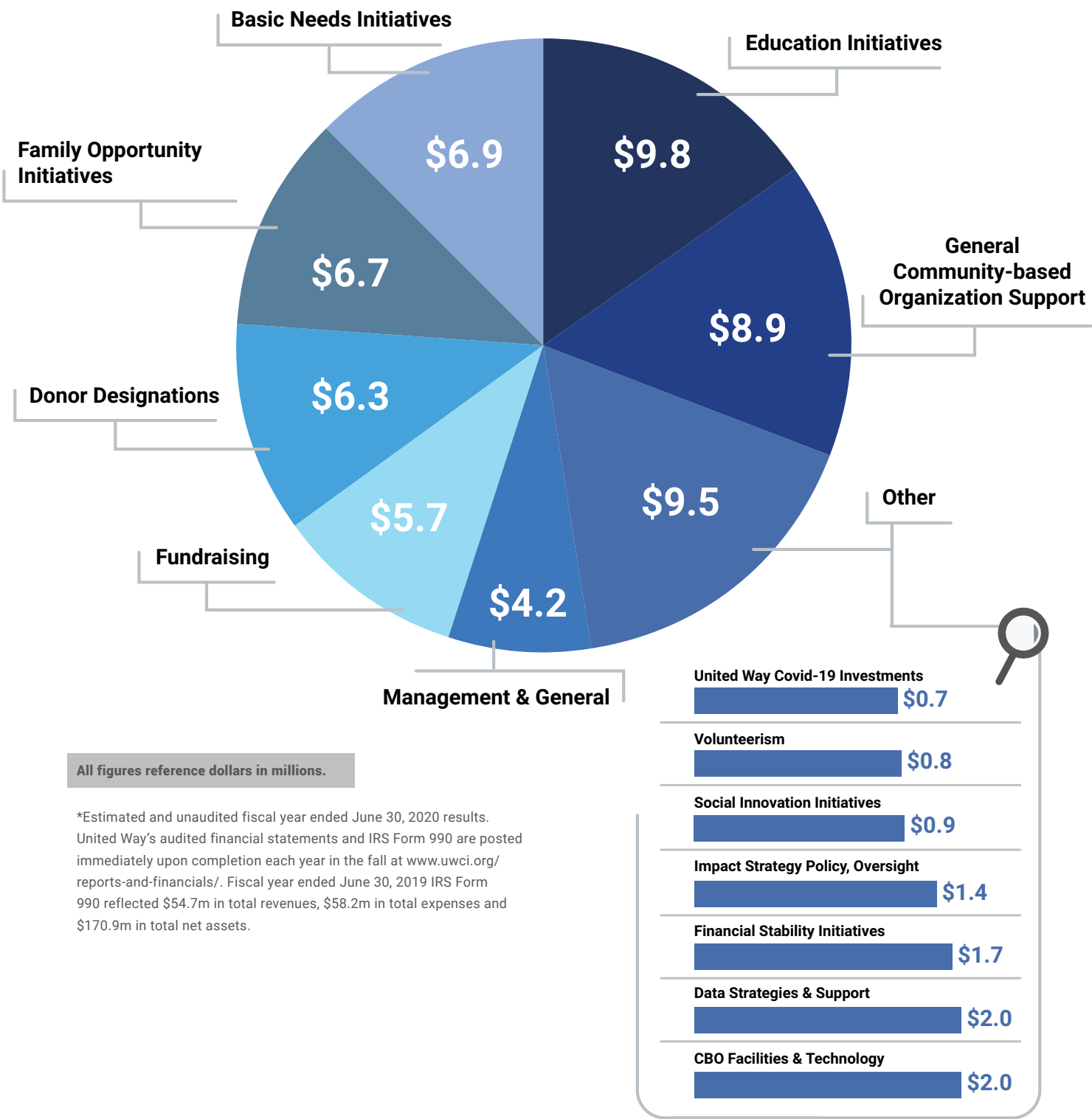
Steve Walker
Walker

- The Executive Committee
- Board Chair

As of 7/8/2020

Community Investment

Through the generosity of our more than 38,000 donors, grantors and other funders, United Way invested approximately* \$58 million in our mission to ensure Central Indiana will be a community where children, individuals and families thrive; neighbors care for each other; and we are proud of all our residents’ quality of life.



Community-based Organizations Accredited by United Way

- Alternatives Inc.

American Cancer Society

American Red Cross of Central Indiana

The Arc of Greater Boone County

Arthur M. Glick Jewish Community Center

AYS

Barbara B Jordan YMCA

Big Brothers Big Sisters of Central Indiana (BBBSI)

Boone County Cancer Society

Boone County Senior Services (BCSSI)

Bosma Enterprises

Boys & Girls Club of Boone County

Boys & Girls Clubs of Hancock County

Boys & Girls Clubs of Indianapolis

Boys & Girls Club of Noblesville

Catholic Charities

Catholic Youth Organization Camp Rancho Framasa

Child Advocates Inc.

Children's Bureau

Children's TherAplay

Christamore House

CICOA

Community Alliance of the Far Eastside

Concord Neighborhood Center

Crossroads of America Council, Boy Scouts of America

Damien Center

Early Learning Indiana

Easterseals Crossroads

Edna Martin Christian Center

Families First
- Family Promise of Hendricks County

Fathers and Families Center

Fay Bickard Glick Neighborhood Center

Flanner House

Foster Success

Girl Scouts of Central Indiana

Girls Inc of Greater Indianapolis

Goodwill of Central and Southern Indiana

Hancock County Senior Services

Happy Hollow Children's Camp

Hawthorne Community Center

Hendricks County Senior Services

Heritage Place

Hoosier Trails Council, BSA

Horizon House

Helping Veterans and Families (HVAf)

Indiana Legal Services

Indiana Youth Group (IYG)

Indianapolis Legal Aid Society

Indianapolis Neighborhood Resource Center (INRC)

Indianapolis Urban League

Indy Reads

Jameson Camp

John Boner Neighborhood Centers

The Julian Center

Kids' Voice of Indiana

La Plaza

LifeSmart Youth

Little Red Door

Lutheran Child and Family Services

Marion County Commission On Youth, Inc. (MCCOY)
- Martin Center Sickle Cell Initiative

Martin Luther King Community Center

Mary Rigg Neighborhood Center

Meals on Wheels of Central Indiana

Meals on Wheels of Hancock County

Mental Health America of Hendricks County

Neighborhood Christian Legal Clinic

New Hope of Indiana

Noble

PrimeLife Enrichment

Public Advocates in Community re-Entry

Reach For Youth

The Salvation Army

School on Wheels

Second Helpings

Sheltering Wings

Shepherd Community Center

Southeast Community Services

St. Mary's Child Center

Starfish Initiative

Sycamore Services

Tangram Inc.

TeenWorks

The Villages of Indiana

Volunteers of America Ohio & Indiana

WellSpring

YMCA of Greater Indianapolis

Youth Connections



Asset Limited, Income Constrained, Employed (ALICE)

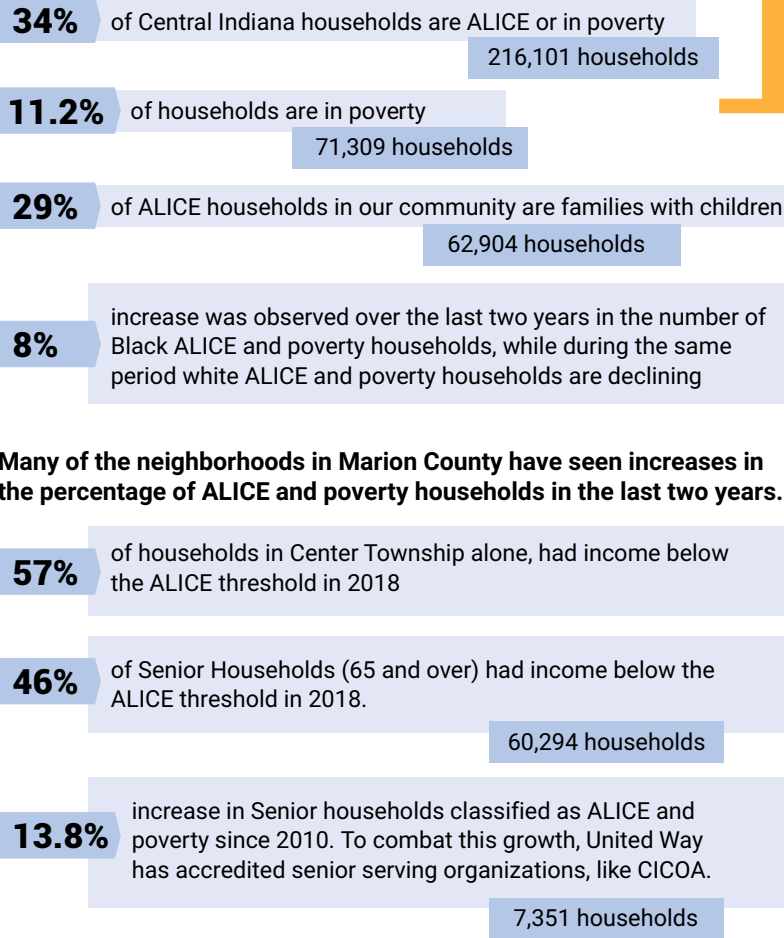
Households that earn above the Federal Poverty Level, but not enough to afford a basic household budget.

ALICE, an acronym for Asset Limited, Income Constrained, Employed, is a new way of defining and understanding the struggles of households that earn above the Federal Poverty Level, but not enough to afford a basic household budget. ALICE could be your child care worker, your parent on Social Security, the cashier at your supermarket, the gas attendant, the salesperson at your big box store, your waitress, a home health aide, or an office clerk. For far too many families, the cost of living outpaces what they earn.

These households struggle to manage even their most basic needs - housing, food, transportation, and health care. When funds run short, cash-strapped households are forced to make impossible choices, such as deciding between quality child care or paying the rent, filling a prescription or fixing the car. These short-term decisions have long-term consequences not only for ALICE families, but for all of us.

*Data highlighted from United Way's 2020 ALICE Report

ALICE DATA



Basic Needs

Regaining Hope through Horizon House

Food. Shelter. Health. Transportation. Most of us take these essentials for granted, but for many people these basic needs are in critically short supply or non-existent. Our Basic Needs work provides support to our most vulnerable neighbors and life-saving assistance to those in crisis situations – helping those in immediate need survive today so they can thrive tomorrow.

Daryl worked as a HVAC professional for years until one day, he suffered an injury in a car accident that threatened his ability to walk again. After a lengthy hospital stay and long-term physical rehabilitation, Daryl regained his ability to walk. Unfortunately, the extended time in recovery forced Daryl out of his job and caused him to be evicted from his home. He had no choice but to live in his car. To make matters worse, someone broke into his vehicle and stole everything he had left, including his identification and medications.

"I started giving up hope after my things were stolen," Daryl shared. "I was doing everything I could each day."



Then, Daryl found United Way accredited community partner Horizon House – a connection that helped him envision hope more realistically. Setting and achieving goals grew easier when Daryl could perform basic tasks like taking daily showers, doing laundry, eating regularly, and even having a mailbox with an address thanks to Horizon House's Outreach Team. They then connected him to a case manager focused on accessing housing who opened his eyes to critical resources, all while coaching him every step of the way.

"Having someone who actually listened and spent time with me made me believe in myself again."

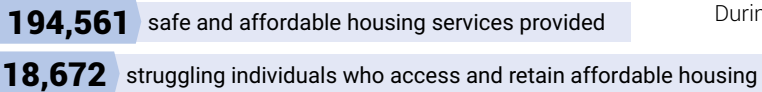
"When my case manager told me I could get back on my feet and get back to life I as once knew it, I began to believe I would."

Today, Daryl continues to rebuild his life in a home with optimism for the future. Horizon House continues to champion Daryl's progress and despite being of retirement age, he has entered a training program and dreams of owning his own customer service business. In his spare time, he shares his knowledge of HVAC systems with his neighbors and inspires others with his progress and generous spirit; bringing a ray of hope to each person he meets.

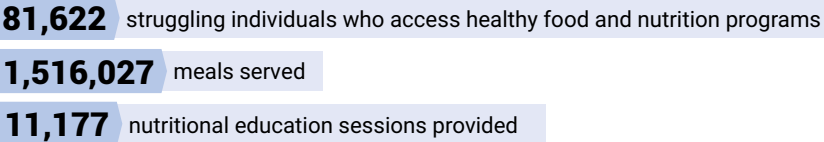
Basic Needs Fund

During July - December 2019

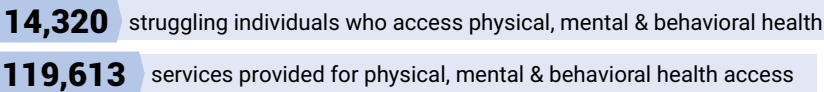
Safe and Affordable Housing



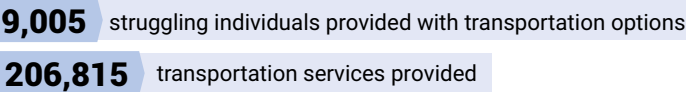
Healthy Food Access



Physical, Mental & Behavioral Health Services Access



Transportation



Emergency Food & Shelter Program

This is a federal program funded through FEMA that allocates funding to local organizations to provide food and shelter assistance to hungry and homeless individuals. Thanks to the following partners:

Program Partners
Catholic Charities, Churches in Mission, Family Promise of Hendricks County, Good Samaritan Network, Hendricks County Senior Services, Indianapolis Urban League, Community Alliance of the Far Eastside, Christamore House, Concord Neighborhood Center, Dayspring Center, Edna Martin Christian Center, Flanner House, Fay Biccard Glick Neighborhood Community Center, Hawthorne Community Center, HealthNet Homeless Initiative Program, Helping Veterans and Families (HVAF), John Boner Neighborhood Centers, La Plaza, Mary Rigg Neighborhood Center, Salvation Army Harbor Lights, Southeast Community Services, The Salvation Army, Shalom House, St. Vincent De Paul Society, WellSpring
Funding Partner(s)
Federal Emergency Management Agency (FEMA)
Volunteer and Community Partners

American Red Cross of Central Indiana, Catholic Charities, Coalition for Homeless Intervention & Prevention, Center for Interfaith Cooperation, City of Indianapolis, Family Promise of Hendricks County, Good Samaritan Network, Hendricks County Commissioner, Hendricks Center Township Trustee, Indianapolis Urban League, Jewish Federation of Greater Indianapolis, Morgan County - Brown Township Trustee, Morgan County - Clay Township Trustee, WellSprings, Noblesville Township Trustee, Boone County Senior Services (BCSSI), St. Vincent De Paul Society, Centenary United Methodist Church, Aspire Indiana, Zionsville Town Hall, Noblesville Fire Department, PrimeLife Enrichment Inc, Third Phase Christian Center, Prevail, Inc., The Salvation Army

Energy Assistance Program

Energy Assistance Program (EAP) is a publicly funded program that provides one-time financial assistance to low-income Marion County residents to offset high utility bills during winter months (and in summer when funding is available). Thanks to the following partners:

Program Partners
Indiana Housing & Community Development Authority, John Boner Neighborhood Centers, Other community partners
Funding Partner(s)
Indiana Housing & Community Development Authority

Homeless Targeted Initiative

The Homeless Targeted Initiative Fund (TIF) is funded philanthropically and supports initiatives that further Marion County's mission to end homelessness and supports the Blueprint to End Homelessness. Thanks to the following partners:

Program Partners
Coalition for Homeless Intervention and Prevention, Other community partners
Funding Partner(s)
Lilly Endowment Inc.

Marion County Behavioral Health

The Behavioral Health Court (BHC) is a post-conviction certified problem-solving court under the umbrella of the Marion County Mental Health Court. The BHC is designed to address the mental health needs and often times co-existing substance abuse of moderate to high-risk individuals in the criminal justice system. The court is comprised of an interdisciplinary team that includes recovery coaching, intensive case management and resource coordination to ensure participants are connected to the community supports necessary to address their mental health, substance abuse and other basic needs to reduce recidivism. Thanks to the following partners:

Program Partners
Centerstone Indiana, Indiana Department of Corrections, Indiana Judicial Center, Indiana University Public Policy Institute, Center for Criminal Justice Research, Jane Pauley Community Health Center, Marion County Community Corrections, Marion County Probation, Marion County Prosecutors Office, Marion County Public Defenders, Marion County Superior Court
Funding Partner(s)
Ruth Lilly Philanthropic Foundation, The Samerian Foundation, Inc.



Supportive Services for Veteran Families

The U.S. Veterans Affairs' Supportive Services for Veteran Families program awards grants that support services for at-risk veterans to reduce the incidence of veteran homelessness and to rapidly re-house veterans currently experiencing homelessness. Thanks to the following partners:

Program Partners
Coalition for Homelessness Intervention & Prevention, Department of Veteran Affairs Community Rehab Programs, HealthNet Homeless Initiative Program, Helping Veterans and Families (HVAF), Indianapolis Continuum of Care, Veterans Administration, Volunteers of America Ohio & Indiana
Funding Partner(s)
U. S. Department of Veterans Affairs

Strategic Transportation Allocation

The Strategic Transportation Allocation provides local match required to leverage federal transportation funds to support transportation services for seniors in Marion County. Thanks to the following program partner:

Program Partners
CICOA

Winter Assistance Fund

Winter Assistance Fund (WAF) is a locally funded winter utility assistance program that covers low-income individuals in Marion County who are ineligible to receive the state's Energy Assistance Program. Thanks to the following partners:

Program Partners
Citizens Energy Group, Indianapolis Power & Light Company, 19 agency referral partners
Funding Partner(s)
Citizens Energy Group, Indianapolis Power & Light Company, Nina Mason Pulliam Charitable Trust

Winter Contingency Plan

The Indianapolis Winter Contingency Plan funds overflow emergency shelters and materials that provide relief to homeless individuals and families when inclement weather poses the threat of serious harm or death during the winter months (November-March). Thanks to the following partners:

Program Partners
Blended Professional Street Outreach Team, City of Indianapolis, Coalition for Homelessness Intervention & Prevention, Horizon House, Helping Veterans and Families (HVAF), Wheeler Mission Minsitries, Other community partners

Jump IN for Healthy Kids

Jump IN for Healthy Kids is a community-wide initiative of the health, business, civic, nonprofit and academic sectors, working together on evidence-based strategies to reduce childhood obesity in Central Indiana. Jump IN's mission is to create healthy places, neighborhoods, and communities where families have real opportunities to make choices that promote their health, vitality and well-being, including access to affordable, healthy food and meaningful opportunities to play and be active. Thanks to the following partners:

Program Partners
Action for Healthy Kids, Alliance for a Healthier Generation, American College of Sports Medicine, American Dairy Association Indiana, American Health Network, American Public Health Association, Anthem Blue Cross and Blue Shield Foundation, LLC, Archdiocese of Indianapolis/MTCA, Ball State University, Beyond Monumental, Big Green, Chartwells, City of Indianapolis, City of Lawrence, Community Alliance of the Far Eastside, Cummins Inc., Early Learning Advisory Council, Early Learning Indiana, Energy Krazed, Eskenazi Health, Far Eastside Action Coalition, Fay Biccard Glick Neighborhood Community Center, Fervent Prayer Church, Finish Line, FirstPerson, The Food Trust, Gleaners Food Bank of Indiana, The Glick Fund, a fund of Central Indiana Community Foundation, Girl Scouts of Central Indiana, The Good Food Connections, Great Families 2020, Greater Lawrence Chamber of Commerce, Hamilton Heights Schools, Health by Design, Healthiest Cities and Counties Challenge, Indiana Association for the Education of Young Children, Indiana Biosciences Research Institute, Indiana Department of Education, Indiana Family and Social Services Administration (FSSA), Indiana Health Information Exchange, Indiana Minority Health Coalition, Indiana State Department of Health, Indiana University, Indianapolis Colts, Indianapolis Greenways Partnership, Indianapolis Indians, Indianapolis Public Schools, Indy Chamber, Indy Hunger Network, IU Fairbanks School of Public Health, IU School of Public Health, Bloomington, Ivy Tech Community College, John Boner Neighborhood Centers, La Plaza, Lawrence Township Trustee, LifeSmart Youth, Inc., Local Initiatives Support Corporation (LISC), Managed Health Services, MDwise, Monarch Beverage, Marion County Public Health Department, MSD of Franklin Township, MSD of Lawrence Township, MSD of Martinsville, MSD of Perry Township, MSD of Pike Township, MSD of Washington Township, MSD of Warren Township, MSD of Wayne Township, Mt. Carmel Baptist Church, National Junior Tennis League, Nemours Health, Nine13 Sports, Northwind Pharmaceuticals, Pacers Sports & Entertainment, Playworks, Purdue Extension, Reconnecting to Our Waterways, Regenstrief Institute, Ruth Lilly Health Education Center, Shape America, Shine Early Learning, SPARK Learning Lab, Wellness Council of Indiana, White River Alliance WFYI, YMCA of Greater Indianapolis
Funding Partner(s)
A.E.T.N.A. Foundation, Anthem Blue Cross and Blue Shield Foundation, LLC, Ascension St. Vincent, Community Health Network, Eli Lilly and Company, Marion County Health and Hospital Corporation, Eskenazi Health, The Glick Fund, a fund of Central Indiana Community Foundation, Indianapolis Colts Indiana University Health, Lilly Endowment Inc., Nemours Health, Roche Diagnostics, United Way of Central Indiana

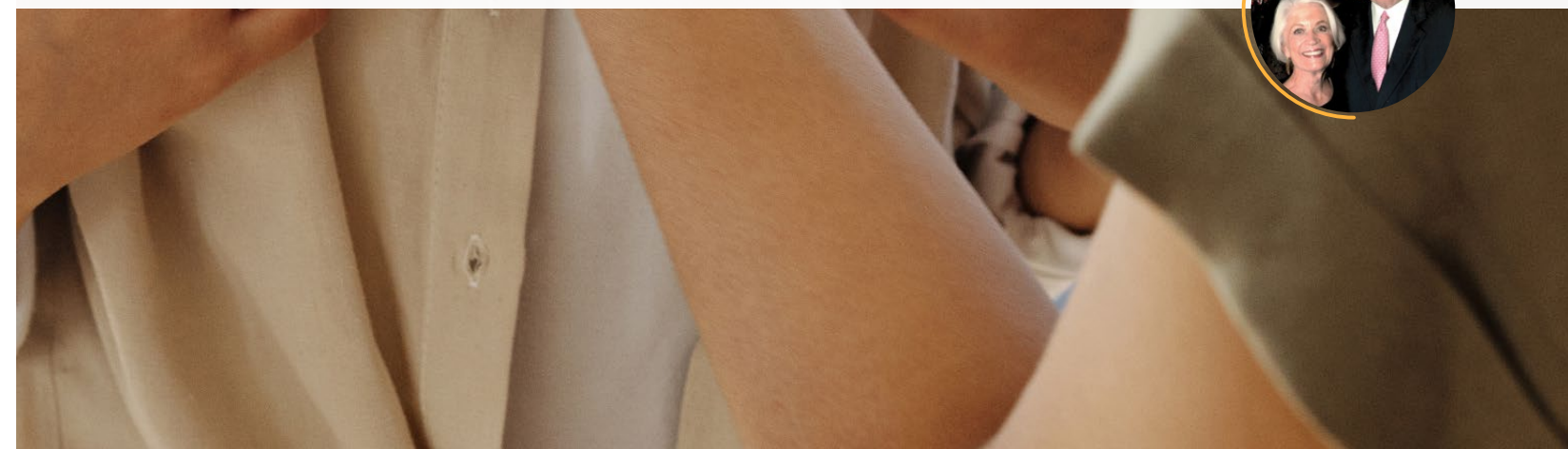
Basic Needs Fund Grantmaking Partners

Community-Based Organization	Housing	Food	Health	Transportation	Systems-level	Investment
Alternatives Inc	x	x		x	x	\$ 100,000
The Arc of Greater Boone County			x	x		\$ 38,000
AYS		x	x	x	x	\$ 15,000
Boone County Senior Services (BCSSI)			x	x		\$ 30,000
Bosma Enterprises				x		\$ 35,000
Boys & Girls Club of Boone County		x		x		\$ 32,000
Boys & Girls Club of Noblesville		x		x		\$ 15,000
Boys & Girls Clubs of Hancock County				x		\$ 15,000
Boys & Girls Clubs of Indianapolis		x	x			\$ 130,000
Catholic Charities	x	x	x	x	x	\$ 275,000
Child Advocates Inc.			x	x		\$ 20,000
Children's Bureau	x	x	x	x	x	\$ 220,000
Christamore House	x	x	x	x	x	\$ 25,000
Community Alliance of the Far Eastside	x	x	x	x		\$ 90,000
Concord Neighborhood Center	x	x	x	x	x	\$ 100,000
Damien Center		x	x	x		\$ 100,000
Easterseals Crossroads	x	x	x	x	x	\$ 265,000
Edna Martin Christian Center	x	x	x			\$ 100,000
Families First	x	x	x	x	x	\$ 250,000
Fathers and Families Center			x	x	x	\$ 100,000
Fay Biccard Glick Neighborhood Center	x	x	x	x	x	\$ 25,000
Flanner House	x	x				\$ 75,000
Goodwill of Central and Southern Indiana	x			x	x	\$ 150,000
Hancock County Senior Services	x	x	x	x	x	\$ 30,000
Hawthorne Community Center	x			x		\$ 50,000
Hendricks County Senior Services				x		\$ 75,000
Horizon House	x	x	x	x	x	\$ 100,000
Helping Veterans and Families (HVAF)	x	x	x	x	x	\$ 90,000
Indiana Legal Services		x				\$ 20,000
Indiana Youth Group (IYG)	x	x	x	x		\$ 55,000
Indianapolis Legal Aid Society	x				x	\$ 50,000
Indianapolis Urban League	x	x		x	x	\$ 175,000
John Boner Neighborhood Centers	x	x	x	x	x	\$ 130,000
The Julian Center	x	x	x	x	x	\$ 40,000
La Plaza	x		x			\$ 75,000
Little Red Door		x	x	x	x	\$ 75,000
Lutheran Child and Family Services	x	x	x	x		\$ 130,000
Martin Center Sickle Cell Initiative	x	x	x	x	x	\$ 25,000
Martin Luther King Community Center	x	x		x	x	\$ 25,000
Mary Rigg Neighborhood Center	x		x	x	x	\$ 75,000
Meals on Wheels of Hancock County	x	x		x		\$ 15,000
Neighborhood Christian Legal Clinic		x			x	\$ 55,000
Noble	x					\$ 200,000
Public Advocates in Community re-Entry		x	x	x		\$ 25,000
PrimeLife Enrichment		x	x	x	x	\$ 50,000
Reach for Youth			x			\$ 40,000
St. Mary's Child Center	x		x	x	x	\$ 40,000
The Salvation Army	x	x	x	x	x	\$ 325,000
Second Helpings			x			\$ 175,000
Sheltering Wings		x				\$ 100,000
Southeast Community Services	x			x		\$ 70,000
Sycamore Services	x		x	x		\$ 75,000
Tangram Inc.	x			x		\$ 75,000
The Villages of Indiana	x	x	x	x	x	\$ 40,000
Volunteers of America Ohio & Indiana	x	x	x	x	x	\$ 250,000
WellSpring	x	x	x		x	\$ 30,000
Youth Connections				x		\$ 10,000
TOTAL						\$ 5,000,000



We give to United Way and other philanthropic organizations because we sincerely believe in helping others who are in need. United Way's work touches all facets of the community, encouraging and providing opportunities for people to further their education and employment. We consider ourselves fortunate to be a partner with such an outstanding organization that's making such a positive impact on people's lives.

- Al and Maribeth Smith



Family Opportunity

Defying the Odds with Indianapolis Urban League

Intergenerational economic mobility lies at the heart of the American Dream. Our Family Opportunity work supports integrated programs that improve the education, financial stability and overall health of the whole family. By intentionally working with parents, caregivers and children together, we create pathways for success and give families the tools needed to secure long-term stability and a brighter future.

At 32 years of age, Rachel, a mother of two and educated in accounting and medical administration, expected to be in a career and happy by this point in her life. Instead, she was just trying to survive. After escaping an abusive relationship and suffering through identity theft, Rachel’s home was now her car. Her children were safe at a relative’s house but she couldn’t care for them without finding a home, gaining employment, and starting over.

“It was hard for me to even look in the mirror and admit to myself this is what I’m going through,” shared Rachel. “I couldn’t make my situation any harder than it already was.”

When Rachel walked into the Indianapolis Urban League (IUL), the staff knew she would be the right fit for the Family Engagement Program – a program based in the practice of the Two-Generational Approach (2Gen).



“Our program assists students, parents, and children. We are about lifting the whole family,” said Kimberly Simmons, vice president of programs at IUL. “Rachel needed a career coach, a financial coach, and a family coach. We showed her she wasn’t in this alone, and that in and of itself, gave her hope.”

It wasn’t an easy path for Rachel, however. To begin the journey, IUL referred Rachel to a shelter for a safe place to stay. But when she missed curfew one evening, Rachel wasn’t permitted to return. Although frustrated, Rachel continued to work hard with her Income and Support Coach and Engagement Program Coach to complete a budget, professional plan and family success plan.

“Even in so much hardship, IUL encouraged me to smile, work hard, and pray,” Rachel said.

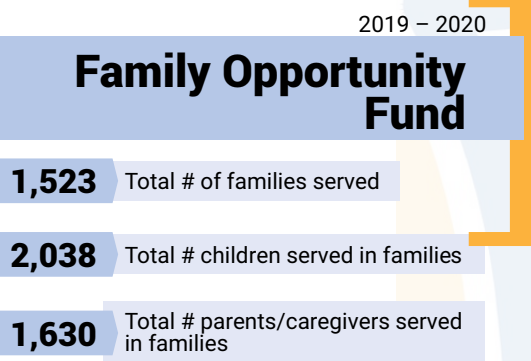
“The support helped me more than just having a new start to life. The program helped my self-esteem.”

Gaining even more confidence, Rachel secured a training credential to further develop her skills and completed the IUL Training Works application for future employment opportunities. IUL provided transportation assistance to meet with her coaches, attend educational classes through Warren Township, and conduct job searches.

2Gen programs don’t stop with just income, employment and budgeting supports. They are meant to wrap around an entire family and improve health and well-being. Instructed by IUL’s Engagement Coach, Rachel and her children participated together in family activities and healthy food demonstrations. They read books together and re-connected to each other, emotionally. For the first time, Rachel learned how to best support her children’s learning in school. Today, the family continues to remain active in the program.

All this work has paid off. Rachel recently became a pharmacy clerk with CIGNA. The position offers Rachel the opportunity to learn additional skills that would support her training as a pharmacy technician. Although Rachel has safe temporary housing, she is very determined to adhere to her budget and success plan. Even with the COVID-19 stay-at-home order, Rachel participates in mental health counseling sessions for IUL parents impacted by the coronavirus.

Rachel’s oldest child graduated this spring from Ben Davis High School. She continues to be present in her children’s lives daily, assists them with e-learning, and continues to secure a safe, stable home for her family.



Asset Funders Network

Indiana Asset Funders Network (AFN) is a regional chapter of grantmakers who invest in opportunities for low and middle income individuals and families to build economic well-being. Members include private, public, corporate, and community foundations, public-sector funders and financial institutions who want to help Hoosiers secure economic stability, for now and for years to come. Thanks to the following partners:

Program Partners

Central Indiana Community Foundation, The Clowes Fund, The Glick Fund, a fund of Central Indiana Community Foundation, Indiana Department of Workforce Development, Indiana Philanthropy Alliance, Indiana United Ways, JPMorgan Chase, Local Initiatives Support Corporation, Lumina Foundation, MacFarlane Family Foundation, Old National Bank, PNC Foundation, United Way of Central Indiana, Wabash County Community Foundation, Women’s Fund of Central Indiana, a Fund of Central Indiana Community Foundation

Centers for Working Families

Built on an evidence-based model developed by the Annie E. Casey Foundation, the Centers for Working Families (CWF) network is designed to address the challenges of the working-poor population and provide them with the financial capabilities, strategies and tools needed to put them on the path to financial stability. Five CWF sites are also supported by a grant through the Siemer Institute for Family Stability, which allows them to apply a multi-generational strategy to their work and focus on outcomes for the entire family. Thanks to the following partners:

Program Partners

Community Alliance of the Far Eastside, Edna Martin Christian Center, Flanner House, Goodwill Industries of Central and Southern Indiana, Hawthorne Community Center, Indianapolis Urban League, John Boner Neighborhood Centers, Local Initiatives Support Corporation, Mary Rigg Neighborhood Center, Public Advocates in Community re-Entry, Inc., Shepherd Community Center, The Siemer Institute for Family Stability, Southeast Community Services

Funding Partner(s)

Taft Stettinius & Hollister LLP, The Siemer Institute for Family Stability

Early Childhood Strategies 2.0

United Way ensures that children have the best possible start in school by assisting early childhood programs through professional development, mentorship, facility improvements, classroom resources and curricular enhancements throughout the six-county area. Thanks to the following partners:

Program Partners

Business Ownership Initiative, Child Care Answers, Indiana Family and Social Services Administration (FSSA), Indiana Partnership for Inquiry Learning, Indianapolis Public Library, Indiana Repertory Theatre

Funding Partner(s)

The Albert G. and Sara I. Reuben Endowment for Early Childhood Development, Indiana Family and Social Services Administration (FSSA), Lilly Endowment, Inc., Ruth Lilly Philanthropic Foundation



Great Families 2020

Great Families 2020 aims to establish neighborhood support networks that provide integrated services in postsecondary education and workforce development, early childhood education, financial support and health and well-being to families living in poverty. Thanks to the following partners:

Program Partners

John Boner Neighborhood Centers, Edna Martin Christian Center, Community Alliance of the Far Eastside, Marion County Commission On Youth, Inc. (MCCOY), Hawthorne Community Center, East Tenth United Methodist Children and Youth Center, DayStar Childcare and Infant Learning Center

Funding Partner(s)

Corporation for National and Community Service, Lilly Endowment Inc., Ruth Lilly Philanthropic Foundation, Lumina Foundation, Samarian Foundation, Cummins Inc., The Glick Fund, a fund of Central Indiana Community Foundation



Indianapolis Preschool Scholarship Program

United Way serves as the administrator for the Indianapolis Preschool Scholarship Program (IPSP), the city's first-ever preschool scholarship program. In this capacity, we oversee the application, outreach, capacity-building and evaluation processes for IPSP and collaborate to manage Marion County's state-run On My Way Pre-K pilot scholarship program for 4-year-olds from low-income families. Thanks to the following partners:

Program Partners

Children's Bureau, The Consultants Consortium, Indiana Family and Social Services Administration (FSSA), Indianapolis City-County Council, Indianapolis Mayor's Office of Education Innovation

Funding Partner(s)

City of Indianapolis, Corteva Agriscience, The Glick Fund, a fund of Central Indiana Community Foundation, Sarah & John Lechleiter



Indy Free Tax Prep / Volunteer Income Tax Assistance

Indy Free Tax Prep is an IRS-sponsored program that provides underserved communities with free tax filing assistance, using IRS-certified volunteers. Volunteer Income Tax Assistance (VITA) sites assist individuals with low to moderate income, persons with disabilities, elderly and Limited English Proficiency (LEP). The program helps taxpayers find all available tax credits and avoid high tax preparation fees. Thanks to the following partners:

Program Partners

Heritage Place, Holy Angels Church, John Boner Neighborhood Centers, Mary Rigg Neighborhood Center, Oasis of Hope Baptist Church, Shepherd Community Center, Southeast Community Services, Indianapolis Public Library-38th Street Branch, Zion Hope Church, South Central Community Action Program- Martinsville, First Christian Church of Martinsville, Brownsburg Public Library, Hendricks County Senior Center, Lebanon Public Library, Fay Biccard Glick Neighborhood Community Center, Robin Run Village, Financial Center First Credit Union, Eastern Star Church, Indiana University Health, Sunstone at Arlington Woods Apartments, Indianapolis Urban League, Hawthorne Community Center, Family Promise of Hendricks County

Funding Partner(s)

Internal Revenue Service, Huntington Bank

Volunteer and Community Partners

Celadon Trucking Company, Covance Greenfield, Cummins Inc., Elanco Animal Health, Eli Lilly and Company, Gregory & Appel Insurance, Hancock Health, HNTB Corporation, HomeBankSB, Indianapolis Motor Speedway, Roche Diagnostics



ReadUP

ReadUP enlists volunteer mentors to help early school-aged kids get on track – and stay on track – with their expected reading levels. Thanks to the following partners:

Program Partners

Avondale Meadows Academy, Boys & Girls Clubs of Indianapolis, Christamore House, Concord Neighborhood Center, Danville Community Schools, East 10th United Methodist Children and Youth Center, Edna Martin Christian Center, Greenfield-Central Community Schools, Indianapolis Public Schools, John Boner Neighborhood Centers, Lebanon Community Schools, Mary Rigg Neighborhood Center, Monroe-Gregg Consolidated Schools, Mooresville Schools, MSD of Lawrence Township, MSD of Martinsville, Noblesville Schools, Tindley Accelerated Schools, Western Boone Community Schools, Westminster Neighborhood Center

Funding Partner(s)

Duke Energy Foundation, Marion County Commission on Youth (MCCOY), Ruth Lilly Philanthropic Foundation

Volunteer and Community Partners

Celadon Trucking Company, Covance Greenfield, Cummins Inc., Elanco Animal Health, Eli Lilly and Company, Gregory & Appel Insurance, Hancock Health, HNTB Corporation, HomeBankSB, Indianapolis Motor Speedway, Roche Diagnostics



Family Opportunity Fund Grantmaking Partners

Community-Based Organization	Educational Success			Workforce Development & Economic Assets			Health & Well-being			Social Capital			Systems-Level Improvements	Investment
	Adult	Youth	Family	Adult	Youth	Family	Adult	Youth	Family	Adult	Youth	Family		
Barbara B Jordan YMCA		x		x				x	x			x		\$ 100,000
Community Alliance of the Far Eastside	x	x		x	x		x	x				x		\$ 115,000
Catholic Charities		x		x										\$ 250,000
Christamore House		x	x	x	x	x	x	x	x	x	x	x		\$ 115,000
Early Learning Indiana													x	\$ 75,000
Edna Martin Christian Center	x	x	x							x	x	x		\$ 250,000
Fathers and Families Center		x	x	x			x		x	x		x		\$ 215,000
Flanner House	x	x	x	x	x	x	x	x	x	x	x	x		\$ 340,000
Goodwill of Central and Southern Indiana	x	x	x	x		x	x	x	x					\$ 340,000
Horizon House				x		x		x						\$ 100,000
Indianapolis Urban League	x	x	x	x	x	x								\$ 340,000
John Boner Neighborhood Centers	x	x	x	x	x	x	x	x	x	x	x	x		\$ 250,000
Lutheran Child and Family Services	x	x		x			x	x	x	x	x	x		\$ 275,000
Reach for Youth	x	x	x		x		x	x	x	x	x	x		\$ 185,000
Southeast Community Services		x		x		x				x	x	x		\$ 250,000
Starfish Initiative	x	x	x	x	x						x	x		\$ 215,000
Volunteers of America Ohio & Indiana				x			x	x		x				\$ 150,000

TOTAL \$ 3,565,000



Indy Free Tax Prep

Making sure our Central Indiana residents receive the most from their tax refunds could not have been more important this year, especially given the unexpected challenges COVID-19 created for so many of our neighbors. Even though our Volunteer Income Tax Assistance (VITA) sites closed for part of the tax season in response to the pandemic, Indy Free Tax Prep still processed more than 3,500 low income returns, more than 1,500 returns for our elderly, and a total of \$3,929,211 in federal refunds for 2019 tax year returns.

United Way joined members of the Internal Revenue Service, the City of Indianapolis, and other community partners to administer Indy Free Tax Prep once again to ease the burden of tax preparation for individuals and families across our region. This year's kickoff, which launched VITA sites in Marion, Hendricks, Boone, and Morgan counties, included a press conference at the Indianapolis Public Library's 38th Street branch.



"I have been preparing taxes for the Volunteer Income Tax Assistance (VITA) program for over 26 years. My parents instilled in me the importance of giving back to the community



and helping others. Tax code and technology can be overwhelming, tedious, unavailable, and confusing. As a VITA volunteer, I can help people in the community fulfill their obligations, avoid penalties, and receive eligible refunds.

The program provides a fabulous opportunity to meet and work with some amazing volunteers, and that would not be possible without various facility and funding partners."

-Rebecca Branson, VITA volunteer



Volunteer Income Tax Assistance

\$3,929,211 in federal refunds for 2019 tax year returns

\$1,282,156 in federal earned income tax credits

3,539 total returns filed since January 2020



Indy Preschool Scholarship Program

"The On My Way Pre-K program allowed my girls to build their social skills and have friends that they see on a day to day basis. When they age out, they will have that social factor to grow with in life. It benefitted me by allowing me to know that there is a safe place for my children to go to be able to build life and educational skills while allowing me to work and build my own educational skills."

- Quaniece James, parent at Daystar

In the last year, United Way continued its focus on strengthening access to high quality early childhood education through investments of leadership and dollars in scholarships, advocacy, capacity, and capital. United Way administers the Indy Preschool Scholarship Program (IPSP) and acts as the lead agency for the Family and Social Services Administration for the On My Way PreK administration in Marion County.

Across IPSP and On My Way PreK, in the last school year, 1,727 three and four-year-old children received scholarships for free PreK to enter Kindergarten ready to learn. At the statehouse, United Way led the statewide PreK Coalition to advocate for steady funding for On My Way PreK that expanded from a pilot in 20 counties to a statewide program, which served 72 counties this year. United Way also solidified future funding for Indianapolis by building out the base number for those receiving On My Way PreK scholarships to include the number of children currently served under IPSP, which will end this year.

To build additional capacity, United Way continued partnerships with Business Ownership Initiative and Early Learning Indiana to provide business and programmatic coaching to local providers to strengthen the quality of care. We also provided teacher trainings, educational enhancements, classroom materials and more to build capacity and strengthen the provider network. To increase access to high-quality childcare, United Way invested \$1.3M in capital projects for providers to expand the number of high-quality seats available for families in Central Indiana, adding 181 new childcare seats for children ages 0-5 years old.





Brook Park Elementary School

A Memorable Page in United Way's ReadUP Story

United Way's legacy program, ReadUP, has made a significant impact on grade-level literacy in Central Indiana. This year the program served approximately 600 students, and engaged more than 800 volunteer tutors in 33 schools across 16 districts in our community. Thanks to the exceptional commitment from staff, volunteers and dedicated students, the ReadUP program continues to be one of United Way's most popular and successful community impact initiatives.

This year, Brook Park Elementary School of MSD Lawrence Township took ReadUP to new heights, thanks to the passion of ReadUP consultants like Jill Fletchall. When National Read Across America Day swept classrooms across the country with storybooks and custom celebrations recognizing the power of literacy, Fletchall coordinated a field trip for Brook Park Elementary students to Booth Tarkington's Civic Theatre, where third graders enjoyed a special performance of Dr. Seuss's *The Cat in the Hat*.

And later, when the world began feeling the agonizing effects of the COVID-19 pandemic, Fletchall refused to let the program, now heading into its fourteenth year of operation in the region, dissolve for the remainder of the academic year. Without hesitation, she quickly assembled district leadership and volunteers from United Way corporate partners, like Roche Diagnostics, to launch a curbside ReadUP drive-thru. The drive-thru provided visitors with children's books of all ages and other resources, along with weekly meals, to support the school's families.

Roche contributed to these events with dedicated employee volunteers and book donations to the curbside drive-thru. Brook Park Elementary School's Principal, Alicia Gatewood, continues to carry immense pride and gratitude for her staff, students, but above all, United Way's mission to make Central Indiana a community where children, individuals and families thrive; neighbors care for each other; and we are proud of all our residents' quality of life.

"Brook Park is incredibly grateful for the continued partnership with United Way's ReadUP program," said Gatewood. "Our third-grade students usually attend weekly visits with mentors, and even when COVID-19 struck our region, we were still able to provide a broader group of students with books in their hands. Students read books and traded them with neighborhood friends, extending the power of this program beyond our school – even during such unpredictable times."

readUP
United Way of Central Indiana

*"Lifting up others gives you a great opportunity to lift up
yourself in so many ways"*

- Zachary Scott
Chairman, Tocqueville Society Council



You Yes You! Prepares Fathers for a Healthier, More Stable Life Following Incarceration

Our Social Innovation initiative is an exciting opportunity to form new partnerships that can disrupt the ways we currently address and prevent some of our community's oldest problems. By harnessing Central Indiana's resilient and entrepreneurial spirit, creating space for exchanging and incubating new ideas, improving technology, and expanding successful small-scale programs system-wide, we are accelerating positive change throughout our community.

At first, all Ericka Sanders wanted to do was organize a father-daughter dance at the Indiana Educational Re-Entry Facility. Ericka herself struggled to maintain a good relationship with her father, and when he recently passed away, she knew it was her calling to change that for other young girls.

But then, it turned into so much more than a dance. It turned into Sanders' mission when she founded You Yes You!

"I simply want to build relationships between incarcerated dads and their daughters and ensure that fathers are on track for healthier lives after prison."



You Yes You!'s re-entry programs have since moved to the Putnamville Correctional Facility.

"Once you get out of prison, there are many roadblocks that prevent you from becoming successful," said Sanders. "We want to help clear some of those hurdles for fathers prior to their release and stay connected to them on their journey outside of incarceration."

To help strengthen the father-daughter bond, Sanders has added book clubs and a Halloween party to the event mix. She provides fathers with journals to write to their children, which they present to them during one of their activities.

"When a child goes to visit a father in prison, it's a small room. There are many things you can't do," Sanders expressed. "We decorate the room with balloons and make sure there is food

and music, and in that moment, it doesn't feel like a prison. It's amazing to watch these fathers melt when they see their children."

To support a father's successful re-entry into society, You Yes You! provides information and resources on resume building, legal assistance, and housing. To remain in the program, fathers must follow strict rules during their time at the facility. It's hard work, but the incentive for fathers to spend more time with their daughters is powerful.

This year, You Yes You! reviewed 225 applications to join their program and accepted 30 fathers and, for the first time in their organization's history, all 30 fathers remain in the program. Their motto, 30 FOR 30: We Are In This Together, stands for the commitment to hold each participant accountable and keep their promise to the organization and their children. It's also Sanders' reminder to be champions for them outside of the facility by building relationships with others that will assist them with the re-entry process.

"My father passed away last year, and I spent hours at the prison telling some of our fathers about my story," Sanders said. "I want them to have healthy relationships with their daughters because it doesn't matter who you are, where you come from, or what your race is: when it comes to your children, all you want to do is be better for them."



Social Innovation Grantmaking Partners

Community-Based Organization	Basic Needs					Family Opportunity				Investment
	Housing	Food	Health	Transportation	Systems Improvements	Education	Workforce Development	Health & Well-Being	Social Capital	
B4UFALL Inc.		x		x		x	x		x	\$ 75,000
Bosma Enterprises		x		x		x	x		x	\$ 30,000
Crossroads Education, Inc.					x					\$ 20,000
Dress For Success Indianapolis				x			x			\$ 55,000
Easterseals Crossroads					x		x			\$ 55,000
Exodus Refugee Immigration, Inc.	x		x	x		x	x	x	x	\$ 10,000
Flanner House		x			x		x	x	x	\$ 75,000
Girls Inc of Greater Indianapolis		x				x	x		x	\$ 55,000
Indiana Black Expo, Inc.		x			x	x	x		x	\$ 65,000
Kheprw Institute							x			\$ 50,000
Public Advocates in Community re-Entry	x			x	x	x	x	x	x	\$ 75,000
Trinity Haven, Inc.	x	x	x	x						\$ 60,000
Volunteers of America Ohio & Indiana			x							\$ 75,000
You Yes You!						x		x	x	\$ 50,000
TOTAL										\$ 750,000

Advocating for the Greater Good

United Way's approach to public policy rooted in education and workforce development initiatives

AllIN4PreK expands to become Early Childhood Education Coalition

After several years of significant progress in pre-k advocacy for low-income families in Indiana, United Way and our coalition of educators, child care providers, civic leaders and corporate leaders across the state broadened the spectrum of our strategic plan to mirror Indiana's birth-to-five year plan. Now called the Early Childhood Education Coalition (ECEC), this effort will advocate for measured investment for early childhood education opportunities for low-income households for the 2021 budget-writing session of the Indiana General Assembly.

To learn from other state's early childhood education advocacy efforts, the ECEC connected with the Alliance for Early Success, a national nonprofit who works with advocates at the state level to ensure every child has an equal opportunity to learn, grow, and succeed. This partnership has provided access to technical assistance from organizations such as the National Conference of State Legislatures, Committee for Economic Development, and the Bipartisan Policy Center as well as weekly webinars with national advocates and the opportunity to access funding to support our work.

When COVID-19 hit and adversely affected schools, employment and childcare, the ECEC engaged in direct advocacy to Indiana's Congressional delegation to ensure federal funding to support child care was included in COVID relief packages. Additionally, the ECEC worked with Family Social Service Administration's (FSSA) Office of Early Childhood and Out-of-School Learning to develop a survey of child care, after school and summer care providers to understand specific needs related to safely reopening.

Signed into Law

United Way testified and supported many bills that became law. Here's just a snapshot.

Administration of 211 Services

United Way worked closely with FSSA, the Governor's office and legislators to amend original bill language to add specificity to the members of the 211 advisory committee to include two members from United Ways, add oversight via an annual report to the General Assembly and allow data exchange to community and social service organizations.

Governor's Workforce Cabinet

United Way successfully advocated for new members to the Governor's Workforce Cabinet and made a number of agency heads non-voting members. We added language to coordinate with the Early Learning Advisory Committee and testified in the House and Senate Committees regarding the importance of connecting workforce with early learning as part of 2Gen solutions.

Various Human Services and Child Welfare Matters

United Way testified in support of an FSSA bill in both the House and Senate that required registered child care ministries to have a certified CPR and first aid adult on site when caring for children. In addition, United Way testified with the Senate Family and Children Services in support of the bill to specify that income earned as an individual employed as temporary job, a paid internship, or a work-based learning course does not count toward eligibility calculations for SNAP and TANF programs.

Regulation of Tobacco Products and Smoking Age

The final bill raised the age to use tobacco products from 18 to 21 years old, including smoking or vaping and increased the fine for retailers who sell products to underage people.



Building the Capacity of the Human Services Network

We'd like to thank Lilly Endowment Inc. for its generous support of the Capital Projects Fund, Facilities Maintenance Fund, Human Services Professional Renewal Grant, and Technology Fund.

Capital Projects Fund

United Way's Capital Projects Fund assists partner agencies with major capital improvements to enhance the delivery of human service programs. As stewards of generous financial support, United Way's Capital Projects Fund Committee ensures grant dollars are used for projects that help committed and fiscally responsible agencies provide services and programs that are consistent with their mission and add value to the community.

Facilities Maintenance Fund

The Facilities Maintenance Fund has enabled United Way to assist partner agencies with the planning and funding of projects that address priority maintenance needs and emergency repairs. The Facilities Maintenance Fund Committee, comprised of volunteers with expertise in facilities planning and management, ensures that projects are warranted and soundly developed.

Human Services Professional Renewal Grant

The Human Services Professional Renewal Grant provides hard-working, dedicated human services professionals with an opportunity to regenerate and reinvigorate themselves, so they can bring fresh ideas and energy to the human care business.

Technology Fund

The Technology Fund assists partnered community-based organizations with the infrastructure upgrades and purchases of hardware, software, and conferencing systems necessary to continue effective operations, with a special emphasis on virtual programming, to serve our community during the COVID-19 pandemic.

We Were Built for This

COVID-19: The story behind the response, the recovery and the gradual re-building of our community.

The COVID-19 pandemic has been called one of the most unprecedented crises in our history. The coronavirus has had an effect on everything around us – our economy, our health, our safety standards, our connections to people, and likely, our priorities. But for United Way of Central Indiana, the pandemic wasn't the first time we've experienced a watershed moment in our community.



United Way was born out of a health and economic crisis.

In the late 1800s, tuberculosis was a deadly diagnosis affecting millions of Americans. In urban areas, like Denver, Colorado, food pantries, churches and disaster relief organizations couldn't keep up with the needs of the growing sick population of children and adults. To help ease the suffering to a greater effect, the community united to raise money and meet the needs of those desperate for food, shelter and medical care. The year was 1887 and United Way was born.

In 1918, Indianapolis established its own United Way to support the war effort overseas and to fight poverty at home. Just a few months after its inaugural campaign, visibly successful on the steps of Monument Circle, United Way helped lift the community out of a global flu epidemic.

The 9/11 terrorist attacks in New York and Washington D.C. sent shock waves throughout our economy – and United Way was there. The Great Recession of 2008 spiked unemployment and severed household wealth – a ripple effect that lasted for years. And once again, United Way was there to help stabilize the community with an economic relief fund established by so many generous donors.

COVID-19: A new crisis in the making.

In early March of this year, a disease no one had ever heard of just a few months prior arrived at the Hoosier border. The fear of spreading COVID-19 closed schools, canceled events and conventions, and halted non-essential travel. United Way quickly convened major funding partners in the community to act, as thousands of children, parents, adults and seniors who were already struggling before the virus were about to face a critical shortage of their basic essentials to survive.

Within days of the first Hoosier diagnosis of COVID-19, United Way was hard at work, preparing to respond to the coming stress and hardship that our community was about to encounter. The Central Indiana COVID-19 Community Economic Relief Fund (C-CERF) was established on March 13 with a \$15 million donation from Lilly Endowment Inc., \$500,000 contributions each from the Central Indiana Community Foundation (through the Glick Fund and The Indianapolis Foundation), Eli Lilly and Company Foundation, Richard M. Fairbanks Foundation, United Way of Central Indiana, and \$300,000 from Nina Mason Pulliam Charitable Trust. United Way was built for this moment of crisis. C-CERF was the first significant economic relief fund created in the U.S. as the crisis was evolving. An unprecedented time in our history resulted in one of the most unprecedented moments of generosity from the Central Indiana community.

With hardship, there was always hope.

After C-CERF was announced, United Way and the founding philanthropic partners went into action to survey the human services network to identify the most immediate needs, in real time. With mandatory quarantine in place for all Hoosiers by late March, COVID-19's effect was felt across all sectors. First responders and healthcare workers were working around the clock. Closed businesses began furloughing and laying off employees. The demand for basic needs was growing every day and basic necessities were hard to come by. To add insult to injury, social distancing for the human services network was a significant barrier for service delivery. How could community organizations help feed people, provide shelter, and help seniors, families and children if they didn't have the safety supplies and ability to keep people at a distance?

CENTRAL INDIANA
COVID-19
COMMUNITY
ECONOMIC
RELIEF FUND

The first round of funding from C-CERF provided much hope to that hardship. Recognizing the immediate issues of childcare for first responders, food access, shelter care, and community centers serving seniors and immigrants, 46 organizations throughout Central Indiana received more than \$7.3 million in grants. At the same time, donations from companies, foundations and individual donors were pouring in, including from Indy's sports leaders Jim Irsay from the Indianapolis Colts and Herb Simon from Pacers Sports & Entertainment. WRTV Channel 6 stepped up as a media partner to encourage people to give back and to showcase the stories of the heroes making a difference and impact happening all around the community.

Through multiple funding rounds with a strategic focus on our community's most emerging needs, resources were dedicated to mental health organizations and in service to underserved populations disproportionately affected by the virus – refugees, LGBTQ+ and communities of color. In May and June combined, C-CERF granted almost \$20 million to another 130 nonprofits.

By the time the final funds were granted, C-CERF had distributed more than \$23 million to more than 180 diverse community organizations and nonprofits serving individuals and families affected directly and indirectly by the COVID-19 pandemic.



"We are proud to be part of a philanthropic community that lifted up such an important fund, so quickly and so generously, to ease the suffering of thousands of our residents during this crisis. We commend the direct service organizations and their employees and volunteers who we've had the honor of supporting through C-CERF and who worked tirelessly to save lives."

– Ann Murtlow

Answering the Call to Serve During Crisis.

Every week, United Way, the Salvation Army and American Red Cross leaders hosted a virtual call for 50-100 direct service providers to discuss what was happening on the ground, share best practices and resources, and support one another.

When Goodwill was forced to close down its retail operation and furlough staff, Gleaners and Midwest Food Bank mobilized to provide meals to their employees. When some clients of Wheeler Mission became infected with COVID-19, churches opened their doors to house additional homeless individuals. Salvation Army was providing cots, meals and supplies to shelters and community centers. And, when the federal CARES Act was announced, United Way's Public Policy staff offered free webinars on how to apply and receive this critical funding for the human services network. These are only a few examples of partnerships, collaborations and fellowship that occurred between Central Indiana's community-based organizations.

While the crisis was one shared experience among the network, each organization faced many unique situations needing special solutions – namely, what to do with, and without, volunteers. United Way quickly mobilized information on its website for dozens of volunteer opportunities with public health recommendations in mind. And then, the crisis made new, creative ideas happen.

When the MLK Center, Edna Martin Christian Center and many senior centers shared a deep concern for senior populations experiencing extreme isolation and stress, the volunteer opportunity, "Call a Senior," was created to much success, especially for quarantined Hoosiers who wanted to help but couldn't leave the house. Emmis Communications and its station WIBC stepped up to create "Hoosiers Helping Heroes" – a movement of appreciation of employees delivering meals and snacks to healthcare workers at Eskenazi Hospital. Delta Faucet and Deloitte LLP employees distributed hundreds of thousands of free masks to employees, volunteers and clients at human service organizations and broadly to dozens of neighborhoods throughout the community – at a safe distance. Even United Way staff, sequestered at home, took time to write and mail cards of encouragement to front line staff at community centers.

As Indiana Governor Eric Holcomb proclaimed on April 1, 2020, United Way and the community at-large were #INThisTogether.

COVID-19 Crisis Calls for County Investment

On April 1, Lilly Endowment Inc. made an additional investment of \$3.5 million to United Way to support people affected by the pandemic in Boone, Hancock, Hamilton, Hendricks and Morgan counties. In June, \$1.8 million had been granted to 50 organizations in these areas and a final round of \$1.7 million will be distributed by August of 2020.

Not a return to normal. A commitment to better opportunity.

The effects of the pandemic on the economy will continue even when active cases of COVID-19 decline. And, the future is difficult to predict with any certainty.

With record unemployment, United Way expects poverty to rise and families will continue to be stretched thin to cover the basics like food, rent and utilities. As Central Indiana’s economy slowly re-opens, philanthropy has an important role to play in partnership with corporations and government in the gradual recovery effort of the community.

United Way of Central Indiana is dedicated to work alongside the public and private sectors to continue helping individuals meet their basic needs, helping families achieve their potential, and finding innovative ways to solve poverty, especially out of crisis. We aren’t hoping for a return to normal. We are fighting for a better opportunity for all.

“We are appreciative of United Way’s administration of C-CERF, and we are inspired by the many organizations that are helping individuals and families who are most vulnerable to the effects of the pandemic.”
– Rob Smith, Lilly Endowment’s senior vice president of collaborative strategies.

A Special Thanks to the Following Donors

Founding Funders				
Central Indiana Community Foundation Inc.		Glick Fund, a fund of Central Indiana Community Foundation		Nina Mason Pulliam Charitable Trust
Eli Lilly and Company		Lilly Endowment Inc.		Richard M. Fairbanks Foundation, Inc.
Eli Lilly and Company Foundation				United Way of Central Indiana
\$100,000 +				
Anthem, Inc.		Jim and Kathy Cornelius		Meijer
Angela and Doug Braly		Jeffries Group LLC		White Oak Foundation, Inc. - Sarah and John Lechleiter
Chase		Lumina Foundation		Anonymous
Collina Foundation, A Fund of Hamilton County Community Foundation		The Margot L. Eccles Arts & Culture Fund, a fund of Central Indiana Community Foundation		
\$50,000 - \$99,999				
Brendan and Susan Fox		The Giant Eagle Foundation		Target Foundation
Elizabeth Ann Beck Foundation		Huntington Bank		Stanley Security Solutions, Inc.
First Financial Bank		Indianapolis Colts		
\$10,000 - \$49,999				
3M Co.		Deloitte LLP		William N. Salin II and Peggy Salin
John and Kathy Ackerman		First DataBank		The Shop Indy
The Ackerman Foundation		KeyBank		Salesforce.org
Gregory A. Ballard		Dr. Eugene and M. Catherine Kroeff		Scripps Howard Foundation
Ted and Peggy Boehm		Judy and Michael Harrington		Strada Education Network Inc.
Brenner Family Foundation, a fund of the Hamiton County Community Foundation		M & J Management Co LLC		Jo and Kirk Taylor
CareSource Foundation		The National Bank of Indianapolis		Adam and Amber Ternet
Margaret M. Coyle		Paychex Community Foundation Inc.		United Way Worldwide
		PNC Foundation		Anonymous (3)
\$5,000 - \$9,999				
Kathleen and Enrique Conterno	Frank Miller Lumber	Jed and Beth Kay	Brian and Mary Pack	Byron and Marsha Robinson
	John and Barbara Gallina	Kevin and Jill Kolodsick	Bob Postlethwait	
Robert and Kathleen Dean	Healthcare Initiatives Inc.	Kent and Linda Manuel	Randall and Susan Long Charitable Fund	Anonymous
Dr. Jonathan Shane Denne	Josh and Ashlie Jonte	Becki Morison		
Dennis and Denise Dickson			Reindl Family Fund	
\$1,000 - \$4,999				
Kirk Akaydin	Jan and Matt Cohoat	Gary A. and Jean Palmer Heck	David and Leslie Morgan	Miles and Amanda Siegel
Mr. & Mrs. Kyle T. Allen	Drs. David and Carrie Coutant	Highpoint Digital, Inc.	Chuck and Valory Myers	Tessa Skidmore
Debra Luffer-Atlas and Pierre M. Atlas	Barbara Crosby	Leonard Hoops	Mark and Suzy Nagy	Gordon and Theresa Slack
John and Teresa Ayres	Mary Elizabeth Dankoski	Horizon Bank	Chad and Julie Paavola	Jeffrey and Heather Smulyan
John and Susan Barnard	Brent Danner	Danny and Pam Iskandar	Jim and Georgianne Parshall	Stanley Security Solutions, Inc.
Josef Bednarik	Ted and Kim Dickman	David Jansen	Richard Payne	Joseph F. Stapleton
Jason and Tami Beheler	Greg and Susan Eaton	Theodore Jessop	Pete and Shari Piazza	State Auto Insurance
Don Bennett and Kate Hillgren	FCCI Charitable Foundation	Ron and Kelley Karn	Dixie L. Platt and Michael E. Burke	Sharon L. Sullivan
The Bill and Jo Ellen Buffie Charitable Fund	Thomas Fitzgibbon	Ramin Kazemi and Erin Huntington	Jeff and Lisa Powell	Laura Tagliani
	Lisa Foltz	James and Jennifer Kelley	Kamnesh Ratnakar Pradhan	Joe and Jill Tanner
Bisesi Family Foundation Fund, a fund of Central Indiana Community Foundation	Pat Foxworthy and Steve Mason	John and Stephanie Koke	Walter and Mary Prouty	Charles T. Taylor
	Kurt Friedrich	Angelika Kraft	Yongming Qu	Brent and Shelly Towns
Sarah Bixler	Karen L. Friss	Pandurang Kulkarni	Dr. and Mrs. George F. Rapp	United Way of Central Alabama
John D. and Anne T. Bradley	Tom and Jenny Froehle	Jason Leet	Charles Reiter	John and Kathy Vahle
Aman and Susan Brar	Tim Gartner	Brian Leffler	John Rudolph	Jan and Al Webber
Thomas Bulic	Eric Gershman	Sara and Jim Lootens	Mr. James and Dr. Janelle Sabo	Barbara J. Weidenbener
Scott Burnett	Marianne Glick and Mike Woods	Michael Markowski	Salesforce Marketing Cloud	Joe and Rose Wernicke
Centra Credit Union	Tim and Karen Grese	Kellie S. McCarthy	Denise and Scott Saxman	Ilya Yuffa
Kip and Nicole Chase	Nicole Grummt	Raegan McGraw	Chris and Karen Scanlon	Anonymous (4)
Matthew Coghlan	Zachary D. Harms	Lauren McNamer	Ryan and Becky Schad	
	Benno Harpring	Emily Millette	Margaret and Duane Shaw	

Special Thanks to City of Indianapolis and WRTV Channel 6

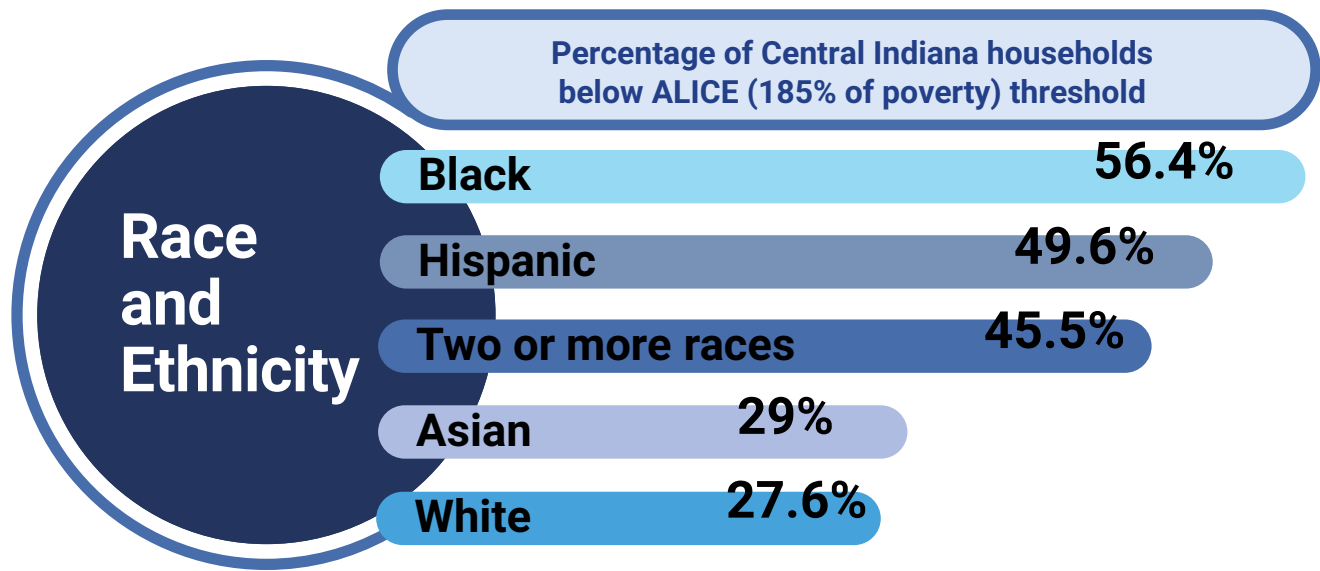
for their in-kind donations and special collaboration/partnership during the administration of this fund



Diversity, Equity, and Inclusion

Building a Brighter Future for All our Neighbors

The data is clear: generational poverty is an overwhelming problem that continues to worsen for communities of color in Central Indiana. According to the most recent ALICE Report, at the same time white households saw minor decreases in poverty and those struggling to make ends meet, Black households in Central Indiana experienced an 8% increase in the same measure over the last two years. It is also well documented that COVID-19 disproportionately affects our Black and Brown neighbors, creating additional barriers for many individuals and families already facing difficult realities before the pandemic struck.



*Data highlighted from United Way's 2020 ALICE Report

United Way is committed to ensuring diversity, equity, and inclusion are embedded in our operations and our impact work.

Over the last year, we have spent significant time listening and learning in conversations with our team, our partners, and our community. This work included the facilitations of internal and external trainings, reading, volunteering with new partners, and the intentional action to better identify and understand our own biases, the role and history of systemic racism in our own community, and the opportunities we can champion and support so that all people have a quality of life we can be proud of.

In May of 2020, United Way's Board of Directors voted to add Equity to our previously existing Diversity and Inclusion Statement. That addition reads:

Equity is the intentional inclusion of everyone in society. Equity is achieved when systemic, institutional, and historical barriers based on race, gender, sexual orientation, and other identities are dismantled and no longer predict socioeconomic, education, and health outcomes.



Additionally, we have demonstrated our deep commitment to these statements by taking the following steps this past year:

- Launched an internal equity team, Inclusion Diversity Equity Advancement Leaders (IDEAL), tasked with helping to embed diversity, equity and inclusion into every area of our work.
- Incorporated inclusivity as a core grantmaking value that guided decision making and ensured selected grantees share our formal commitment to diversity, equity and inclusion, within their organization and program design.
- Continued our requirement that all applicants and funded partners provide a breakdown of the race and ethnicity of clients served over the past year, and during the term of their grants.
- Worked with C-CERF funding partners to grant more than \$1 million specifically to grassroots organizations, led by and primarily serving people of color, for basic needs supports in communities hardest hit by COVID-19.
- Created a virtual educational series, Understanding the Roots of Racism, designed to examine the ways systemic racism has influenced disparities in health, housing, access to nutritious food and transportation for Black individuals and families in Central Indiana.
- Conducted audits to ensure United Way's internal processes and policies reduce unconscious bias in our hiring, promotions, and professional development for all teammates.

While initial progress has been made, it's certain United Way's work in diversity, equity and inclusion must continue as a primary focus as we journey, as individuals and as a team together, toward a brighter future for all our neighbors. We look forward to taking the next steps internally and externally to work for a better tomorrow today.



Marianne Glick & Mike Woods

Making Hope Happen, Today and Tomorrow

Marianne Glick and Mike Woods' philanthropy is guided by one overarching value: supporting organizations that help create opportunities for the most vulnerable in our community to reach their full potential. That's why when deciding where to bestow a gift, they chose United Way of Central Indiana as the recipient of \$1 million, becoming members of the Million Dollar Roundtable.

"United Way is the anchor organization for our city. They are essential to supporting those in need in our community through their network of nonprofits tackling our neighbors' most complex issues." - Marianne Glick



Marianne's story with United Way started in 1989 when Tom Binford approached her to lead the first women's division of a United Way campaign. The next year, she joined the board as one of three women on a more than 90-member board. It was that disparity that led her to help start the Executive Women's Leadership Program to provide training for women to serve on volunteer boards. Within five years, the United Way board was one-third female and today is more than forty percent female. Since then, Marianne has served on a number of community partners' boards and chaired two record-setting United Way campaigns. Today, she is a Director Emeritus of the United Way board.

She attributes her enthusiasm and passion for giving back to her parents Gene and Marilyn Glick.

"My parents' words and actions instilled in me the importance of giving back. In my 20s and 30s, before I was able to contribute money, I looked to use my time and skills to make a difference with organizations doing meaningful work."

Their gift will support three key areas of focus, including the Family Opportunity Fund, capacity building and TeenWorks – all of which help to create a more level playing field for the community. The Family Opportunity Fund aims to interrupt the cycle of poverty by serving the entire family's needs. TeenWorks, a program her father started, provides job opportunities for underserved teens and empowers them to achieve excellence through community-based work and professional development. Lastly, the intentional investment in capacity building will support partners throughout Central Indiana's human services network as they continue to expand their two-generation programming and integrate it within all their work. Each of these initiatives connects to the same idea that a wraparound approach to addressing the family's needs will help to break the cycle of poverty and enable them to reach their dreams.

"By supporting United Way, we know that our investments – of advocacy, time and money – are reaching far and wide. It doesn't stop with them; they use their resources and skill to multiply the impact."

Thanks to philanthropists like Marianne and Mike, we can create a community where individuals and families thrive.

Million Dollar Roundtable

Our heartfelt gratitude goes out to these individuals for their extraordinary generosity and community spirit.

Angela and Doug Braly

Michael G. Browning

Jim and Kathy Cornelius

Christel DeHaan*

Elaine and Henry Fischer

Marianne Glick and Mike Woods

Eugene and Marilyn Glick Family Foundation

Jim S. Irsay

Sarah and John Lechleiter

Ruth Lilly*

Andreas and Mary Sashegyi

Mel Simon*

Randy and Deborah Tobias

Gary and Rosemarie Wendt

*deceased

Meridian Society

(DONATIONS OF \$25,000 – \$999,999)

Named after one of our community’s most iconic streets and main thoroughfares, the Meridian Society is a collection of those who are recognized easily for their individual contributions to Central Indiana – but when joined together, their investment, leadership and passion for positive change helps guide and make possible the work of United Way of Central Indiana.

Lois and Jim Ackerman*

Kate and Dan Appel

John and Teresa Ayres

Melissa and Bradon Barnes

David and Jackie Barrett

Elizabeth A. Beck

Martin Bott and Angelia Barnes

Mary and Steve Boelke

Gail K. Boudreaux and Terence Boudreaux

The Brauer Family Foundation

Christopher and Cynthia Coble

Rod Cotton

Brenda Crowe and Jan Erik Backlund

J. Scott and Lorraine Davison

Rollie and Cheri Dick

Ted and Kim Dickman

Lori Efroymsen-Aguilera and Sergio Aguilera

Mr. Paul Evon

Brendan and Susan Fox

Tom and Jenny Froehle

Mr. Stephen Fry

John and Barbara Gallina

The Glasscock Family Foundation

Charles and Susan Golden and the Golden Family Foundation

Mary and Tom Grein

W. Kent Grose and Johna Norton

Judy and Michael Harrington

Jeff and Celia Harrison

Henry Havel & Mary Stickelmeyer

William and Gina Heath

Gary A. and Jean Palmer Heck

James and Rebecca Henry

Mark and Karen Hill

Mr. and Mrs. Alan and Jennette Hill

Tim and Jenny Holihen

Alexandra and Paul Hoogestraat

Kalen Jackson

David Lawther Johnson and Anne Nobles

Troy and Bob Kassing

Jed and Beth Kay

Stephanie Chen Kim

Donald Knebel

Kevin and Jill Kolodsick

Susan and Kenyon Kopecky

Dr. Eugene and M. Catherine Kroeff

Uma Kuchibhotla and Muppalla Sukumar

Alan and Sue Leighton

Tom Linebarger and Michele Janin

Eric M. Loughmiller

Kathy Maeglin and Dr. A.J. Allen

Mike and Jody Mason

Bill and Annie Meyers

Bryan and Cathie Mills

Sally and Alan Mills

Andy and Lorna Mohr

Jim and Jackie Morris

Ann and Jim Murtlow

John and Carolyn Mutz

Michael and Anne O’Connor



Meridian Society

(DONATIONS OF \$25,000 – \$999,999)

Chuck and Judy Okenfuss

Myles O’Neill and Fionnuala Walsh

Michael Overdorf and Amy Barragree

Gregory and Robin Pemberton

Mel and Joan Perelman

Leigh Ann and Robert Pusey

Chris and Dave Ricks

N. Clay and Amy McConkey Robbins

Jim and Vickie Roe

Livingston L. Satterthwaite

Bill and Helene Scott

Zachary and Jennil Scott

Cindy Simon-Skjodt

Mari and Daniel Skovronsky

Josh Smiley

Andrew and Kristie Smith

Maribeth and Al Smith

Denny and Cathy Sponsel

“At Goelzer Investment Management, we believe intentional corporate engagement is an essential part of helping our high net worth and institutional clients across the country dream, invest, and live. Together, with them, we make progress in our communities with integrity, positivity, and respect. Indeed, for more than 50 years, we have supported our mission-driven partners through financial assistance, board involvement, and meaningful volunteer work.

While the work to make our country more inclusive, more vibrant, and truly better for all will never be done, we are committed to making the investments of time and treasure to make a real difference so that everyone can live a fulfilled life pursuing their dreams.”

- Gregory and Suzy Goelzer



Stephen E. and Betty L. Sterrett

Frank and Jane Walker

Steve and Brenda Walker

Bradley Weinberg* and Betty Routledge

Anne and Sid White

Christopher Wilson

Anonymous (4)

*deceased

We established The Meridian Society in the fall of 2009 after attending a meeting in Dallas, Texas with a group of committed Tocqueville Society members. This launch coincided with the formation of our longstanding partnership with the Indianapolis Colts, as we worked to provide our most cherished donors with unforgettable appreciation. I distinctly remember the group’s first-ever event being held at the home of Christel DeHaan, featuring renowned musician Sylvia McNair.

- Don Knebel, 2009 United Way Campaign Chair

Tocqueville Society

(DONATIONS OF \$10,000 – \$24,999)

Founded in 1984, the United Way Tocqueville Society is an exclusive national giving society that celebrates our most passionate donors and provides opportunities for engagement and deeper connection to the work supported by United Way’s mission.

The Tocqueville Society recognizes and unites local philanthropic leaders who have devoted their time, talent, and treasure to creating long-lasting change so together we can be proud of the quality of life of every individual and family in Central Indiana.

Tocqueville Society Council members

Mike Becher	Andre Franklin	Scott Luc	Bob Potts
Jason Beehler	Troy Gilstorf	Valory Myers	Zachary Scott, Chair
Deborah Daniels	Shelly Langona	George Plews	Julie Singer
Joshua Fleming			
John and Kathy Ackerman	Bryan and Elaine Brenner	Diane Cruz-Burke and Craig Burke	
Mike and Amy Alley	Gordon and Angela Brooks	James S. Cuning	
Mr. Arvie Anderson and Mrs. Kelly Copes-Anderson	Mr. and Mrs. Walter P. Bruen	John Curry	
George Antony	Scott E. Bruns	Deborah Daniels and Lyle Mannweiler	
Bob and Debbie Armitage	Henry and Sherri Bryant	Virginia Davidson	
Dr. Leigh B. Bangs and Ms. Alice E. Shooter	Keith and Tina Burks	Dr. and Mrs. Manuel Debono	
Paul and Jaclyn Barrett	James T. and Jean S. Burns	Steve and Theresa Dellinger	
The John M. and Paula H. Beals Family	Sarah and Keith Burton	Curt and Lynn DeVoe	
Mike and Bea Becher	Steve and Sally Caltrider	Dennis and Denise Dickson	
Jason and Cecilia Beehler	Ben and Charlotte Campbell	Michael and Suzanne Dilts	
Tiffany Benjamin and Bill Dwenger	Cynthia and John Carr	Richard and Sue DiMarchi	
Don Bennett and Kate Hillgren	Veronica A. Chase	Ms. Libby Driscoll	
Paul and Laura Bickle	Roy and Anne Marie Christian	Betsy Dustman	
Allan C. Bir	Mr. and Mrs. Alan Cohen	The Margot L. Eccles Arts & Culture Fund, a fund of Central Indiana Community Foundation	
Daniel L. Boeglin	Jan and Matt Cohoat	Brian and Sarah Edwards	
Rich and Emily Boits	Kathleen and Enrique Conterno	Drs. Jeffrey T. and Susan M. Emmick	
Rosanne Bonjouklian	Angela and Bill Corley	Scott and Lisa Enright	
Bobbi and Glenn Bosch	Dan and Francine Corsaro	Kevin and Diana Ephlin	
John and Kristina Bourquard	David and Carrie Coutant	Kevin and Dawn Ervin	
Bob and Mechelle Brandenburg	Greg and Jennifer Coy	Carol J. Feeney	
John and Deborah Brehm	David Crawford	Craig and Mary Fenneman	

Tocqueville Society

(DONATIONS OF \$10,000 – \$24,999)

David and Phyllis Ferrell	Thomas and Arlene Grande	Michael and Liane Hulka
Julie Fetters and Jim McGill	Jeffrey and Terri Grant	Ryan and Melissa Iannucci
Joshua and Mindy Fleming	Tim and Karen Grese	Harriet M. Ivey and Richard E. Brashear
Jodie Floyd	Susan Haber	Kay S. Jackson
Megan S. Fogarty	Tom Hagadone and Pam Miller	Keith B Johns and Ellen S Johns, DDS
D.R. and Cherie Foley	Benno Harpring	Martin and Rebecca Johnson
Bruce H. Frank	Lisa Harris, M.D.	Philip and Irma Johnson
Dr. Timothy R. Franson	John and Marianne Hart	Frank and Suzanne Kaiser
Bill and Kim French	Jonathan Haug	Ron and Kelley Karn
Rob Friedman and Mindy Hutchinson	Scott E. Herbst	Sabine Karner
Michael and Kristin Fruehwald	Edgardo Hernandez	Darren S. Kay
Wayne “Rick” Fuson	David and Mia Herzog	Dr. Stacy Keding and Dr. Paul LePlae
Carl and Donna Gahwiler	Richard E. and Vicki Mech Hester	Jamie and Linda Kehn
Tim Garnett and Peter Slaymaker	Mr. and Mrs. Chad Hickman	James and Jennifer Kelley
Frederick H. and Megan M. Garver	Bob Hicks and Thalia Hammond	Rebecca O. Kendall
Steve and Cindy Gillman	Kevin Hipskind	Barb and Jim Kew
Troy J. and Brittany R. Gilstorf	Jeff and Terri Holley	Korlon and Roxanne Kilpatrick
Geoffrey and Karen Glanders	J. Mark and Kim Howell	Dr. Kraig Kinchen and Dr. Tina Harris
The Grabovsky Group	Mark and Rebecca Hughes Family	David and Elizabeth Klimes

Remembering Christel DeHaan

Christel DeHaan was one of the world’s most notable business, academic and philanthropic leaders. Locally, she was our neighbor on the northwest side who built her life and made her success here, while continuously donating back to make Central Indiana a stronger community. Christel was driven to succeed and inspired excellence in whatever she pursued.



As a United Way million dollar roundtable member, Christel believed in making transformational change happen, especially for children close to home and all around the world. She lived by a simple philosophy of “caring, sharing and making a difference,” which translated to better academic opportunities for all children. She spoke often about how alleviating poverty started with the foundation of education, and she put substantial resources behind it. She believed everyone deserved a chance to succeed and inspired so many other philanthropists to follow her lead.

Christel DeHaan’s name is etched on buildings, in rooms, and on plaques all over our city, and rightly so. She deserves the visible reminder of her legacy as a staunch supporter of human creativity, knowledge, and resiliency. But her greatest mark will be the generation of children who will benefit from her substantial effort to care, share, and make a difference.

Tocqueville Society

(DONATIONS OF \$10,000 – \$24,999)

Tocqueville Society

Cindy Konich

Jon and Kyle Kroehler

Craig Kuechenberg

Stephen and Shelly Langona

Mary Nold Larimore and Jim Larimore

Jim and Kathy Laudick

David and Amy Leising

Jeffrey N. Levy and K. Vanessa Ng

David P. and Lynn Lewis

Nathan and Robin Lewis

Susan M. Lewis

James* and Mary Jane Limp

Sara and Jim Lootens

Carlos Lopez, Ph.D.

Beth A. Lorschbach

Scott and Emily Luc

Cynthia and Gino Lucchese

Carey and Kathy Lykins

Rebecca Lynch

Bronwen L. Mantlo

Kent and Linda Manuel

Dennis and Sharon Martin

John and Sherry Martin

Drs. James Martinez

John and Kay Mason

Rose M. Mays

Jeff and Annette McFarland

Marni McKinney

Drs. James and Melisa Martinez

Allison B. Melangton

Jamie Merisotis and Colleen O'Brien

Ann M. Merkel

Rob and Linda Metcalf

Michael Cobas Meyer and Maria de los Angeles

Jason and Katie Meyers

Andrew Michie

Mark Miles

Sandra and Bernie Miller

David and Robin Miner

Mr. Darin Moody

Steve and Lisa Moore

Martin and Leigh Moorman

Dr. Daniel H. Mowrey

Dennis and Kristen Murphy

Mr. and Mrs. James W. Murphy

Chuck and Valory Myers

Mike and Deb Myers

Mark and Suzy Nagy

Jonathan and Cathleen Nalli

Steven and Dawn Neal

Blake Lee and Carolyn Neubauer

Jenn and Scott Niemeyer

Dave and Mimi Noesges

Teresa Morton Nyhart and Eldon H. Nyhart, Jr.

Richard and Mary Beth Oakes

Dr. and Mrs. Coleman and Christianah Obasaju

Lawrence and Ann O'Connor

Sam and Alexis Odle

Walter and Susan Offen

Denny and Donna Oklak

Steve and Jen Oleksiw

Stephen and Lori Orander

Mike Ososki

Ryan and Christy Owings

Chad and Julie Paavola

Brian and Mary Pack

William and Libby Padgett

Holly and John Pantzer

Robert M. and Kelli DeMott Park

Kathleen Pearson

Alison and Rhett Perkins

Bart and Amy Peterson

Bryan and Dawn Petriko

Lance and Tracy Pfeifer

Jonathan and Rebecca Polak

Gregg and Lynn Poston

Bob and Lillian* Potts

James Powers

Mark Prall and Leslie Carter-Prall

Steven Pratt

LaTona Prentice

Charles and Ann Preston

Ron and Birgit Priest

Rob and Julie Pruitt

John Reuter

Andrew Rewald and Ellie Hall

Greg and Sharon Rexing

Jean and Lamar* Richcreek

Steven J. and Heather Riddle

Timothy J. Riffle and Sarah McConnell

Christopher and JoLeigh Rigsbee

Edward J. and Stacey M. Roberson

Ryan and Terri Roberson

Sallie W. Rowland

Arup K. Roy and Anindita Sen

Joel and Rebecca Ruselink

Peter Rusthoven

Karin W. Sarratt

Chris and Karen Scanlon

Ryan and Becky Schad

Mr. and Mrs. Roger Schmenner

Mary Ann Schmid

Eric Schultze and Marcia Kolvitz

Andrew and Anne Sellers

Jerry and Rosie Semler

Brad and Wendi Shaffer

Mark and Gerri Shaffer

Aarti and Shreyas Shah

Anne and David Shane

Margaret and Duane Shaw

Matthew J. and Nicole R. Sheetz

Joey Shortridge

Julie A. Siegler

Julie Singer and Andrew Keeler

Rev. Jean M. Smith

Mark Smith

Rob Smith and Jan Lesniak

Tony and Marla* Smith

Tony Smith

Jeffrey and Heather Smulyan

Drew and Brenda Soshnick

Bruce and Kris Steinman

Diane and Mark Stenson

Connie Bond Stuart and James Stuart

Kevin and Joanna Sullivan

Mr. and Mrs. Houston L. Swenson

Nancy Swigonski and Wade Clapp

Don Tanselle

James L. Taylor

Adam Ternet

Ron and Sally Thieme

Gary Thompson and Leigh Harris

John and Norma Thompson

Bethany and Brad Thomson

Ponce and Regina Tidwell

Jerry and Linda Toomer

Kathryn M. Tracey

John and Kathy Vahle

Melissa and Mike Veenhuizen

Shaun and Johanna Wallisa

Jim and Dana Ward

Darren and Mumba Washington

Susanne Wasson

Philip and Cathy Weaver

Alonzo and Alicia Weems

Mike and Annie Wells

Robyn and Bryan Werner

Mr. and Mrs. Richard A. West*

Dr. and Mrs. William J. Wheeler

Fred and Elizabeth Wiese

Angie and Andy Wilkinson

Heather Willey

Jeff and Carol Willman

Brian Witchger

William and Kimberly Witchger

Bryan and Karen Wright

Ace and Beth Yakey

Dr. and Mrs. Ramarao Yeleti

Deanna Young

Tim and Jenny Young

Donald Zakrowski

Sara and Michael Zeckel

Alan and Annamaria Zimmermann

Gene and Mary Ann Zink

James and Rita Zink

Alfonso and Agnes Zulueta

Anonymous (2)



Legacy Giving Circles

TOCQUEVILLE LEGACY GIVING CIRCLE
(ENDOWED DONATIONS OF \$200,000 AND ABOVE)

Mike and Amy Alley	Donald Harding	Albert and Sara Reuben
Malcolm W. & Connie Applegate	Julia and Andre Lacy	Melvin Simon
Thomas and Jane Cooling Brady	Sarah and John Lechleiter	Julie Singer and Andrew Keeler
Jim and Kathy Cornelius	Jim and Mary Jane Limp	Tony and Marla Smith
Rodney D. Cotton	Scott and Emily Luc	Troy and Sara Montigny
Christel DeHaan	Bryan and Cathie Mills	Henry Havel and Mary Stickelmeyer
Rollie Dick	Ann and Jim Murtlow	Randy and Deborah Tobias
Betsy and Jack Dustman	George Newhall	Frank and Jane Walker
Herbert and Jane Falender	Gregory and Robin Pemberton	Steve and Brenda Walker
Marianne Glick and Mike Woods	David and Miriam Resnick	Mr. and Mrs. Richard West

LEADERSHIP LEGACY CIRCLE
(ENDOWED DONATIONS OF \$30,000 - \$199,999)

Nancy Ahlrichs	Jay and Susan Geshay	Jane and Andy Paine
Michael and Mary Jane Becher	William Griffith, Jr.	Robert and Kelli Demott Park
Myrtle Beiersdorfer	Edward E. Harris	Robert and Lillian Potts
David and Betsy Bikoff	Richard E. and Vicki Mech Hester	N. Clay and Amy McConkey Robbins
Mary and Steve Boelke	John and Phyllis Holliday	Keith and Mary Jane Ruddell
Thelma Buescher	Raymond Houk	Moe and Judi Silverman
Mike and Kandi Caldwell	Jim and Doris Hughbanks	Denny and Cathy Sponsel
Robert Cavanaugh	Elizabeth Jennings	Sidney Taurel
Chuck and Karen Cohen	Barton L. Kaufman Family	Nonie and David Vonnegut-Gabovitch
Jan and Matt Cohoat	Stephanie C. Kim	John Werth
Deborah Daniels and Lyle Mannweiler	Steven and Tammy Latterell	Hershel B. Whitney
Dale F. and Melanie K. DePoy	Penny Anne Lee	John K. Williams
Lori Efroymsen-Aguilera	Susan and Marvin Mitchell	William Woost
Linda and Bruce H. Frank	Dayton and Trudy Molendorp	Beth and Ace Yakey
Nick and Mary Ann Frenzel	Alexis and Samuel Odle	
Karen L. Gentleman and Michael P. McCarty	Edward and Sally Ohleyer	

Grantmaking Partners

Grants made to United Way of Central Indiana

\$1 Million and Above		
Corporation for National and Community Service	Lilly Endowment Inc.	
\$100,000 - \$999,999		
Corteva Agrisciences	Indiana Family and Social Services Administration Office	Nina Mason Pulliam Charitable Trust
Efroymsen Family Fund, a Fund of Central Indiana Community Foundation	Siemer Institute	Marion County Public Health Department
Indiana Housing & Community Development Authority	Indianapolis Power & Light Company	Richard M. Fairbanks Foundation, Inc.
	Internal Revenue Service	Ruth Lilly Philanthropic Foundation
		Anonymous (1)
\$75,000 - \$99,999		
Citizens Energy Group	Strada Education Network	
\$50,000 - \$74,999		
Allen Whitehill Clowes Charitable Foundation, Inc.	Nicholas H. Noyes, Jr. Memorial Foundation	
Indiana University Health	Samerian Foundation, Inc.	
\$25,000 - \$49,999		
Arthur Jordan Foundation	Glick Fund, a Fund of Central Indiana Community Foundation	Lacy Foundation
\$15,000 - \$24,999		
MCCOY Inc. - Marion County Commission on Youth, Inc.		
\$10,000 - \$14,999		
Old National Bancorp		
\$5,000 - \$9,999		
United Way Worldwide	Huntington National Bank	
Duke Energy Foundation, Inc.	Zink Distributing	
\$1,000 - \$4,999		
3M Foundation	The Suick Family Foundation	Enterprise Holdings
Thompson Distribution Company	Eastern Star JEWEL Human Services, Inc.	

Corporate and Foundation Gifts

\$1 Million and Above

Eli Lilly and Company

\$100,000 - \$999,999

3Points ●
Allison Transmission, Inc., and UAW Local #933
Anthem Blue Cross and Blue Shield of Indiana
Citizens Energy Group
Corteva Agriscience

Cummins, Inc.
Enterprise Holdings, Inc.
Gene B. Glick Company, Inc.
Indianapolis Power & Light Company
Lilly Endowment Inc.

Marian, Inc.
OneAmerica
Roche Diagnostics
Anonymous (1) ●

\$75,000 - \$99,999

GEICO

PNC

UPS

\$50,000 - \$74,999

Indianapolis Colts
Lumina Foundation for Education

Pacers Sports & Entertainment
Telamon Corporation ●

\$25,000 - \$49,999

The Ackerman Foundation
Arlington/Roe
BMO Harris Bank
Caterpillar, Inc.
Delta Faucet
Duke Energy
Elements Financial
Elizabeth Ann Beck Foundation

Federal Home Loan Bank of Indianapolis
Fifth Third Bank
Firestone Building Products and Industrial Products
Huntington National Bank
Indiana Farm Bureau Insurance
Indiana University Health
KAR Global
Katz, Sapper & Miller, LLP

MDwise ●
MET Foundation
The National Bank of Indianapolis
Raymond James & Associates, Inc.
Taft
Teachers Credit Union

\$15,000 - \$24,999

Allied Solutions, LLC
AT&T Inc., CWA & IBEW
August Mack Environmental, Inc.
BMW Constructors, Inc.
Deloitte

General Motors Company
Horton, Inc.
The Jennings Endowment Fund and The Jennings Philanthropic Fund
NCAA

Old National Bank
Penske Entertainment Corp. ●
Regions Bank
Vectren A CenterPoint Energy Company
Walker

\$10,000 - \$14,999

Aero Industries, Inc. ●
Alro Steel Corporation
Anova ●
Availity
Becknell Industrial ●
The Indianapolis Foundation, a CICF affiliate
Christel DeHaan Family Foundation
Ernst & Young LLP ●

First Financial Bank
Goelzer Investment Management, Inc.
Hancock Health
Ice Miller LLP ●
Indiana Lumbermens Mutual Insurance Co.
Kennedy Tank & Manufacturing Co., Inc.
KeyBank
KSM Consulting ●

Mid America Clinical Laboratories ●
Midwest Mole ●
Mi-Tech Metals, Inc.
Onebridge
PepsiCo
Sharp Business Systems - Indiana ●
Stanley Security Solutions, Inc.
Strada Education Network



Corporate and Foundation Gifts

\$5,000 - \$9,999

Aqua Indiana Inc.
Ascend Indiana ●
Bedel Financial Consulting, Inc. ●
Bernie & Sandy Miller Family Foundation
Caldwell VanRiper ●
CareSource
Collina Foundation, a Hamilton County Community Foundation Fund
Comcast
Compass Commercial Construction Group ●
Costco
Emmis Communications ●
Erie Insurance
FirstPerson
GE Capital / ERC

Giant Eagle
Greenfield Banking Company
Gregory & Appel Insurance
Hachette Book Group
Health and Hospital Corporation of Marion County
Hubbard Family Foundation
Indiana Business Advisors ●
Indiana Chemical Trust ●
Indiana Health Information Exchange, Inc.
Thrive HDS, Inc.
Lauth Group ●
Lenex Steel ●
MacAllister Machinery ●
Managed Health Services
Messer Construction Company

N.K. Hurst Company ●
OmniSource Corporation
OurHealth / Marathon Health ●
Pepper Construction of Indiana
Pitney Bowes
Richard M. Fairbanks Foundation, Inc.
Rock Island Refining Foundation
Sharpen / Jupiter Peak ●
Shiel Sexton Company, Inc.
Somerset CPAs ●
State Auto Insurance
State Bank of Lizton
Steel Dynamics
Straticos ●
Usher Funeral Home

\$1,000 - \$4,999

AAA Hoosier Motor Club
Abbott Controls
Allstate Insurance Indiana MCO
Aon
Aqua Systems
Associated Bank

Barnes & Thornburg LLP ●
Bituminous Insurance Companies
Boardable ●
Bose McKinney & Evans LLP ●
Buckingham Foundation ●
C.A. Advanced, Inc. ●

Cambridge Capital Management Corp.
Capitol Construction Services, Inc. ●
Cardinal Health
Cargill Corn Milling/DCI
Carlisle Branson Funeral Service & Crematory ●

Corporate and Foundation Gifts

\$1,000 - \$4,999 (Continued)

The Brees Dream Foundation
Center Township Trustee (Danville)
Centier Bank
Chubb Group of Insurance Companies
Citizens Bank - Mooresville
Cohoat and O’Neal Management ●
Community Foundation of Boone County, Inc.
Covideo ●
Cranfill Development Corp.
Crawford, Murphy & Tilly, Inc.
CSL Plasma
CTI Construction, LLC
Deflecto ●
Due Doyle Fanning & Metzger, LLP
DWA Healthcare Communications Group
Elanco Animal Health
Exelon
Express Scripts, Inc.
Faegre Drinker Biddle & Reath
The Farmers Bank
Federated Insurance Co.
Fiserv
Gaylor Electric ●
Genentech
Gentleman McCarty
Goodman’s Jewelers, Inc.
GPD Associates
Grange Insurance
Hageman Group ●
Halstead Architects ●
Hancock County Community Foundation
Hanover Insurance Group
The Hartford Financial Services Group, Inc.
High Alpha ●

Hobson Chevrolet Buick GMC
Horizon Bank
IBJ Media ●
Illinois Tool Works Hobart Service
Indiana Business Brokers ●
Indiana Logo Sign Group ●
Indy Public Safety Foundation
Innovatemap ●
Jobvite ●
Johnson Controls, Inc. Systems Services North America
Kenney Corporation ●
Kirby Risk Electrical Supply - Indianapolis
Koch Air LLC
Kokosing Construction Company, Inc.
LabCorp ●
Langham
Leading Properties, LLC ●
Leaf Software Solutions, Inc.
Liberty Mutual Insurance Co.
Marian University ●
Marietta Financial Services ●
Masco Corporation
MCM CPAs & Advisors ●
Metro Indianapolis Board of Realtors ●
MutualBank
My-te Products, Inc.
Nationwide Insurance
Neal & Summers Funeral & Cremation Center ●
Noel-Smyser Engineering Corporation
NSK Corporation
The Nyhart Company ●
Omega Communications, Inc.
OneCause ●
PactSafe ●

Powderkeg ●
Praxair Surface Technologies, Inc.
Principal Financial Group
ProCourse Fiduciary Advisors ●
Regal Beloit Logistics
Rehab Medical ●
RJE business interiors ●
Rowland Design, Inc.
S.K. Huffer & Associates, PC ●
Sahm’s Family of Restaurants ●
SalesTuners ●
Schuckit & Associates PC ●
ServiceMaster by Westphal ●
Simons Bitzer & Associates, PC
Smallbox ●
Strategic Marketing & Research, Inc. ●
South Central Indiana REMC
STAR Financial Bank
TechPoint ●
Thorne Family Trust
Textron Aviation Cessna ●
TIC International Corporation / UAS
TOA (USA) LLC
TWG Development ●
Walmart Inc.
Weekends Only
Zylo ●

● Denotes a new corporate gift to United Way of Central Indiana during 2019-2020. Thanks to the generosity of The Lilly Foundation, these gifts will be matched – doubling the impact of these new corporate partners.

Donor Engagement Networks

Recognizing Leaders in Giving

Donor Engagement Networks are groups of passionate individuals who join forces to advocate, volunteer and generously donate to support the work of United Way. Collectively, Donor Engagement Network members contributed more than \$6 million toward United Way last year.

LINC

United Way LINC, Lead Impact Network Change, is a national effort to increase awareness and engagement with United Way for individuals under 30 through unique volunteer events with a social twist.

Emerging Leaders

Emerging Leaders brings together up-and-coming young professionals age 40 and younger who have a passion for philanthropy, personal development, and community.

Diversity Leadership Circle

Advocates of diversity from all backgrounds, cultures, thought processes, and beliefs come together in Diversity Leadership Circle to fight for the financial stability of all Central Indiana residents.

Women United

Women United harnesses the power of dedicated and influential women who have a passion for improving the opportunities of future generations.

Always United

Stay connected to the community and invest in your passions as you navigate tough career decisions and transitions. Always United provides key resources and opportunities to anyone interested in connecting with like-minded individuals, giving back to the community, and retiring the United Way.

2019-2020 Donor Engagement Network Steering Committee Members

Leigh Bangs
Mike Becher*
Betsy Bikoff
Tamara Cypress
Katie Edwards
Andre Franklin*
Laura Gulden
Matthew Hadley
Charlie Hageboeck
Isabel Hawkins
Elliott Hoard
Chloe Huang

Stephen Kirchhoff
Brenna Malatestinic
Patrick Maynor**
Troy Montigney
Tiffany Nguyen*
Valerie Nohren
Kiera Perkins
Jim Peterson
Ken Roth
David Sheets
William Shuck
Julie Singer*

Ryan Steele
Denny Stephens
Ninad Thanawala**
Terri Tillery
Jefferson Trippel
Tekiah Tunstall**
Danielle Vetter
*denotes chair
** denotes vice-chair





ELEVATE

Presented by GEICO

An Evening of Philanthropy Under the Big Top

Inspired by the Greatest Show on Earth, this year's young professional's gala offered circus-style food, fun and entertainment. ELEVATE, presented by GEICO, raised more than \$86,500 toward United Way Basic Needs Fund to ensure our neighbors have access to safe and affordable housing. Additionally, attendees assembled hundreds of emergency and transitional housing kits to be donated to our community partner, Horizon House.



2020 ELEVATE AWARD WINNERS

Board Member of the Year presented by Eli Lilly and Company - Marla Taylor, Taylor Advising on behalf of Brooke's Place
Volunteer of the Year presented by Roche Diagnostics - Delano Robinson, Eli Lilly and Company on behalf of Black Data Processing Associates of Indianapolis

Nonprofit Employee of the Year presented by Katz, Sapper & Miller LLP - Kelsey Burton, Executive Director, Paws & Think

Employee Resource Group of the Year presented by BMO Harris Bank - Roche Young Professionals at Roche

Community Ambassador of the Year presented by Delta Faucet - Sarah Myer, Indiana Sports Corp

People's Choice Award Winner presented by OneAmerica - Luke Zhang, Data Scientist at DemandJump



2019-2020 ELEVATE Steering Committee Members

Evher Crowner, Salesforce

Caitie Deranek Stewart, IU School of Medicine

Katie Ellis, RJE business interiors

Michelle Gary, GEICO

Ellie Hall, Eli Lilly and Company

Christopher Hicks, Kronos**

Jamie Jansen, OneAmerica*

Carlisha Kellum, Salesforce

Sarah King, Deloitte LLP

Molly Lauck, Appirio

Tiffany Nguyen, Eli Lilly and Company

Nicole Pannell, Allegion

Abbey Rich, DEFENDERS

Sarah Sadowski, NCAA

Morgan Shiflett, Alzheimer's Association

*denotes chair **denotes vice-chair



"I love the idea of recognizing all the incredibly talented young leaders for their contribution to improving the lives of others. I am proud to live in a city where there's an event designed by young professionals for young professionals where we can collectively put our time, effort and dollars behind the issues facing struggling families in Central Indiana."

— Jamie Jansen, ELEVATE Host Committee Chair



Sponsors

Thank you for helping us help others.

ELEVATE

Presenting sponsor: GEICO

Anthem Blue Cross Blue Shield of Indiana

BMO Harris Bank

Deloitte LLP

Delta Faucet

Eli Lilly and Company

Faegre Drinker Biddle & Reath

Glick Philanthropies

Indy Public Safety Foundation

Katz, Sapper & Miller, LLP

Lumina Foundation for Education

OneAmerica

Republic National Distributing Company

RJE business interiors

Roche Diagnostics

Singer Wealth Advisory of
Raymond James

Sun King Brewery

United Technologies Corporation - Carrier

UPS

Leadership Giving Appreciation Night at the IRT*

UnitedHealthcare

Trunk or Treat with LINC

Deloitte LLP

Women's Speaker Series: Finding the Path That's Right for You

Anthem Blue Cross Blue Shield of Indiana

Donor Engagement Network Sponsor

United Technologies Corporation - Carrier

*Postponed



*Now, more than ever, the necessity of the United Way of Central Indiana is clarified.
Too many of our neighbors live in, or on the brink of, poverty.*

*The impact of systemic barriers and obstacles on the ability of too many Hoosiers to
meet their basic needs, build the foundation for self-sufficiency, and establish financial
stability has become clearer this year. I am so proud to support the work of the United
Way of Central Indiana to invest in our community so that Central Indiana is a vibrant,
equitable, thriving environment for all of its residents, businesses, and organizations.*

– Julie Singer

United Way Board Member

Singer Wealth Advisory of Raymond James



Corporate Volunteerism at Work

Corteva Agriscience

United Way corporate partner, Corteva Agriscience, faced transformational change this year when they separated from DowDuPont and became their own entity. The separation provided them with a chance to centralize a global brand for their customers, making their connection to Central Indiana feel a lot more personal. As a result, it only made sense that a newly embraced brand and identity meant their community outreach goals should reflect a similar objective.

"I'm extremely proud of how Corteva Agriscience employees generously support United Way and our community by contributing their time or financial support," said Susanne Wasson, President of Corteva's Crop Protection Business Platform. "Participating in the United Way campaign demonstrates our employees' dedication to improving the lives and communities in which we live and work."

The campaign process began with diversified collaboration with the development of a United Way committee. The cross-functional team included workplace veterans, new employees, and guidance from United Way's Volunteer Engagement and Fundraising teams. The committee, led by United Way Engagement Coordinator and Global Community Investment Manager for Corteva, Heidi Spahn, produced tremendous results not just for their organization, but for the greater Indianapolis community.

"Corteva Agriscience is driven by the purpose to enrich lives, and we have passionate employees who enjoy volunteering their time and expertise in the local community," said Spahn. "It is gratifying to be able to volunteer my time to assist United Way community partners and give back to those in need. Together we can make a difference."

Between exposure to poverty simulations placing their employees in the shoes of real families facing poverty in our region, participation in a community organization fair that included twelve United Way partners, and a kit build where 81 employees assembled 1,200 snack packs supporting children across Central Indiana, volunteerism translated into direct impact.

The strengthened partnership not only grew Corteva's corporate giving by 56% compared to the prior fiscal year, employee donations also increased by 8% - and 25% of their leadership donors, responsible for gifts of \$1,000 or more, were new.



A Platform that Empowers

Salesforce Philanthropy Cloud is a platform that empowers corporations to put their values into action. It extends each company's reach by engaging its customers and employees in philanthropic endeavors, enhancing brand reputation and awareness, attracting and retaining top talent, and delivering greater impact.

Philanthropy Cloud leverages the trust, innovation, and artificial intelligence capabilities of the Salesforce platform to help companies meet their philanthropic goals and measure impact. This first-of-its kind impact solution allows companies, employee causes, and communities to come tighter to improve the state of the world.



United Way of Central Indiana has over 3,000 employees utilizing the platform from multiple companies. Throughout North America, over 250 companies have joined forces with Salesforce Philanthropy Cloud to change the way they approach their CSR goals. Among those benefitting from Salesforce Philanthropy Cloud is the publicly traded, Fortune 500 company, Navient located in Fishers, Indiana.

Philanthropy Cloud makes it easy to set up volunteer opportunities and charity campaigns to give back to the community. It also is an easy way to communicate with employees, showcase events and news, and a fun way to keep employees connected.

"Philanthropy and corporate citizenship go hand-in-hand at Navient, where we encourage employees to give back to their community with gifts of time, talent, and money. Utilizing Philanthropy Cloud allows our employees to easily donate and volunteer for the organizations that mean the most to them. The accessibility allows for employee giving to continue from anywhere and during times of crisis to help bring immediate relief to their community."

- Jon Kroehler
Chief Human Resources Officer, Navient



+



[CHANGE TOMORROW.TODAY.]

United Way
of Central Indiana



uwci.org
2955 N. Meridian Street
Suite 300
Indianapolis, IN 46208

@uwci

